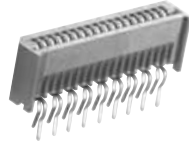
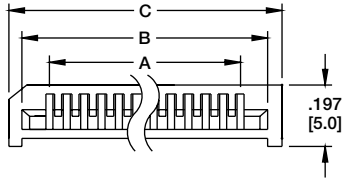
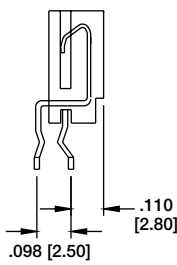
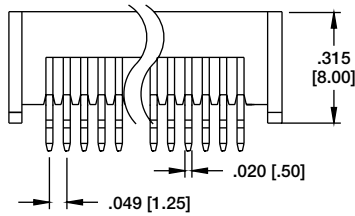


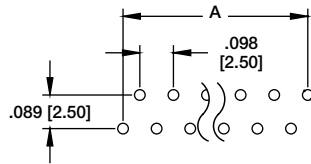
PCB-B
1.25 (.049") TOP ENTRY THRU HOLE



PCB-B-18-T-25

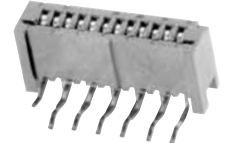
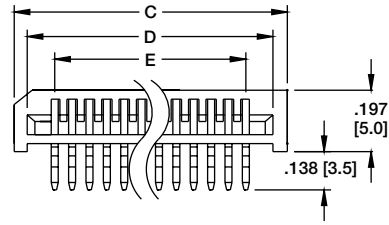


A = .049 [1.25] X No. of Spaces
B = A + .098 [2.50]
C = A + .197 [5.00]

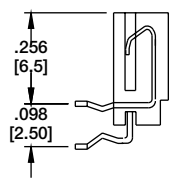
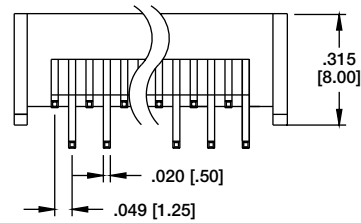


Recommended PCB Layout

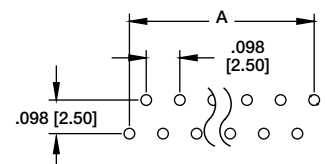
PCB-B
1.25 (.049") SIDE ENTRY THRU HOLE



PCB-B-12-SA-25

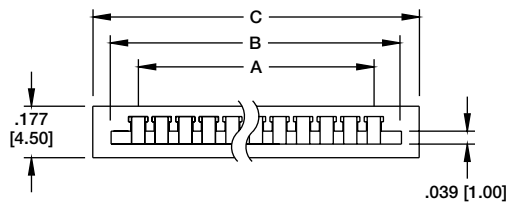


A = .049 [1.25] X No. of Spaces
B = A + .098 [2.50]
C = A + .197 [5.00]

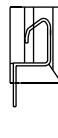
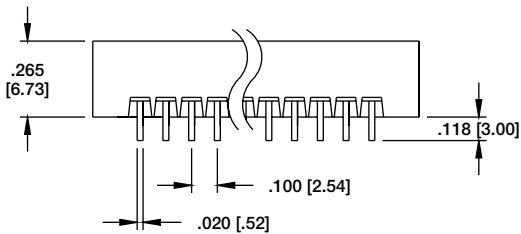


Recommended PCB Layout

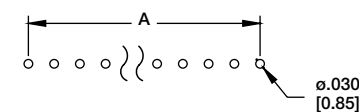
PCB-A
.100" (2.54) TOP ENTRY INLINE THRU HOLE



PCB-A-10-T

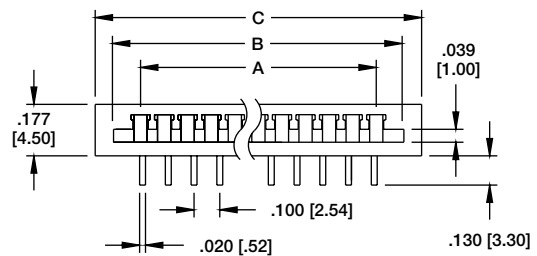


A = .100 [2.54] x no. of Spaces
B = A + .232 [5.90]
C = A + .315 [8.00]

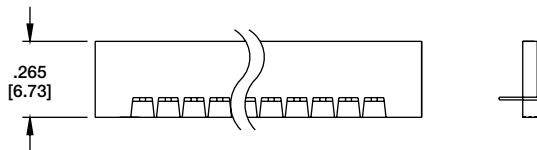


Recommended PCB Layout

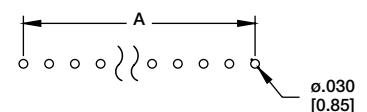
PCB-A
.100" (2.54) SIDE ENTRY INLINE THRU HOLE



PCB-A-13-SA



A = .100 [2.54] x no. of Spaces
B = A + .232 [5.90]
C = A + .315 [8.00]



Recommended PCB Layout