

PIN 1

A

B

C

D

.343 [8.70]

.039 [1.00]

.459 [11.65]

.070 [1.78]

.398 [10.10]

.165 [4.20]

.039 [1.00]

.053 [1.35]

.012 [0.32]

.394 [10.00]

.071 [1.80]

.065 [1.65]

X

-1 = .118 [3.0]

-2 = .098 [2.5]

**PCI EXPRESS  
THRU HOLE PCB MOUNT**

**PCIE-98-1**

.033 [0.85]

.156 [3.97]

.170 [4.32]

.009 [0.25]

.079 [2.00]

.079 [2.00]

.098 [2.50]

.295 [7.50]

PART NO. & POSITIONS	DIMENSIONS			
	A	B	C	D
PCIE-36-1	.984 [25.00]	.301 [7.65]	.236 [6.00]	.321 [8.15]
PCIE-64-1	1.535 [39.00]	.852 [21.65]	.787 [20.00]	.872 [22.15]
PCIE-98-1	2.205 [56.00]	1.522 [38.65]	1.457 [37.00]	1.541 [39.15]
PCIE-164-1	3.504 [89.00]	2.821 [71.65]	2.756 [70.00]	2.840 [72.15]

\* Available in Straddle Mount

ø.059 [1.50]

.340 [8.65]

.984 [25.0]

.035 [0.90]

1.024 [26.0]

1.178 [29.90]

.221 [5.6]

.077 [1.95]

.535 [13.6]

.032 [0.80]

.331 [8.4]

.093 [2.35]

.536 [13.6]

.260 [6.6]

.114 [2.9]

.220 [5.6]

1.57 [4.0]

A

B

C

.047 [1.2]

.193 [4.9]

.177 [4.5]

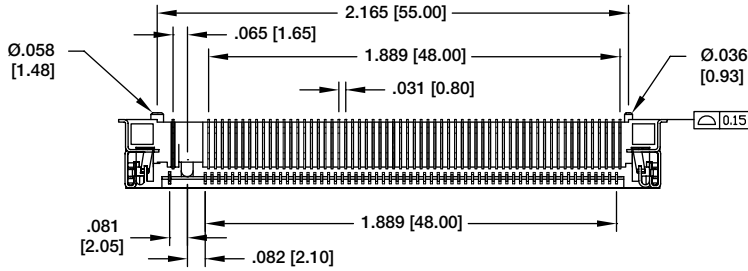
**MINI PCI EXPRESS**

**MPE-52-R-SMT-3.8**

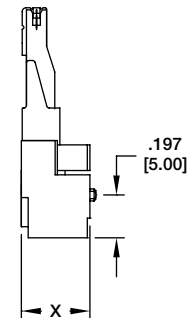
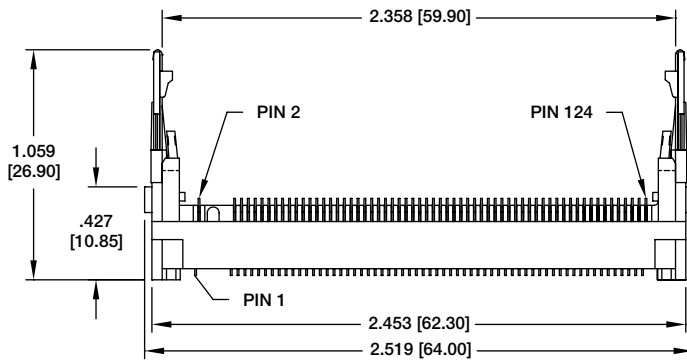
**MPE-52-R-SMT-9.0**

PART NUMBER	DIM A	DIM B	DIM C
MPE-52-R-SMT-3.2-TR	5.20	2.80	3.20
MPE-52-R-SMT-3.8-TR	5.60	3.20	3.80
MPE-52-R-SMT-4.9-TR	6.80	4.40	4.90
MPE-52-R-SMT-6.-TR	8.00	5.60	6.10
MPE-52-R-SMT-9.2-TR	9.20	6.80	7.30

### MINI PCI SURFACE MOUNT

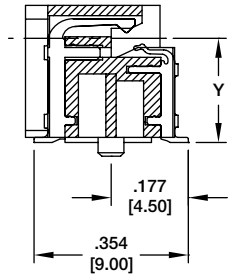


MPC1-124-2-SMT

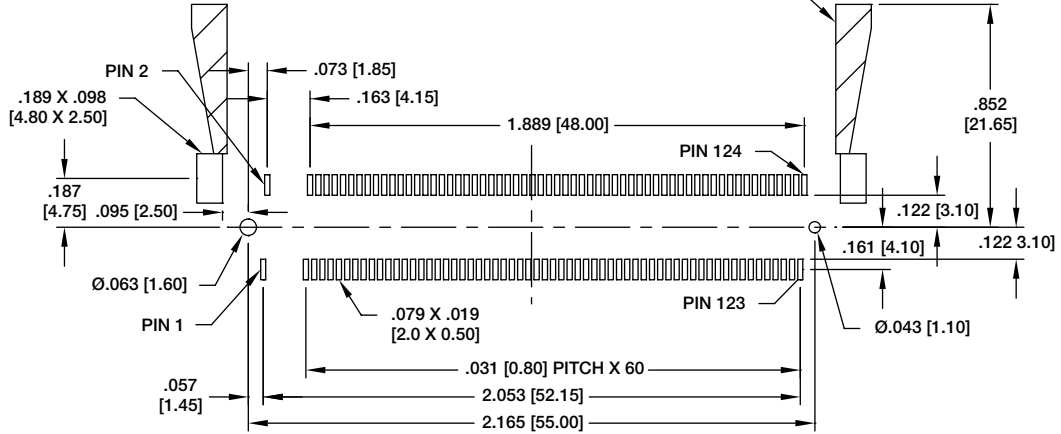


STANDOFF HEIGHT

(SEE CHART)



LEVER MOVEMENT AREA  
DO NOT MOUNT COMPONENTS IN THIS AREA  
PRINTED CIRCUITS ONLY



Recommended PCB Layout

PART NO	DIMENSIONS	
	X	Y
MPC1-124-2-SMT	.362 [9.20]	.287 [7.30]