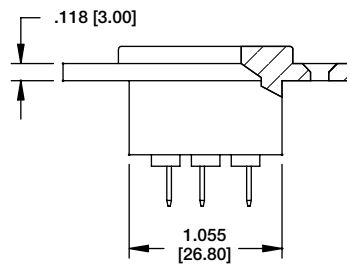
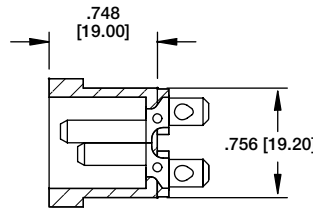
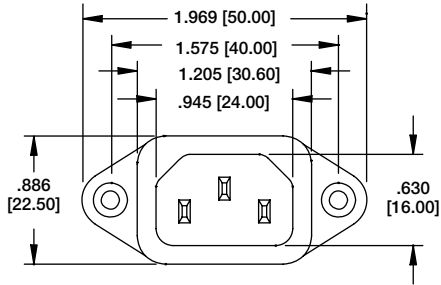
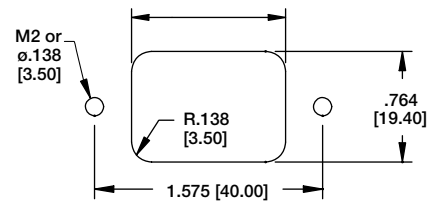


IEC-A SCREW ON PANEL MOUNT



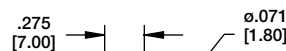
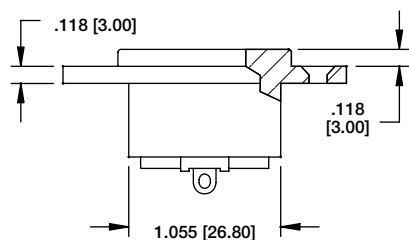
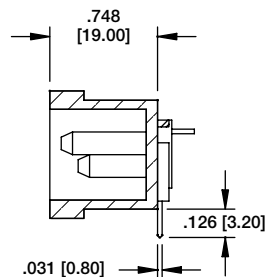
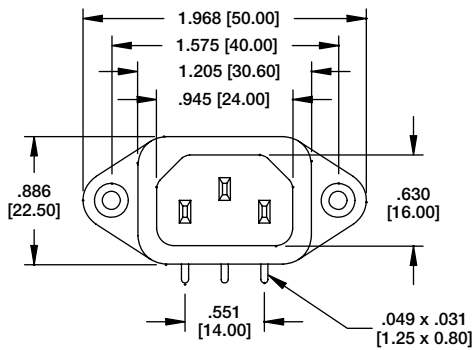
IEC-A-1

1.075 [27.30] Front Mounting
1.212 [30.80] Rear Mounting



TERMINAL OPTIONS			
1	2	3	5
.187 Q.C.	.250 Q.C.	.157 Solder	.098 Solder

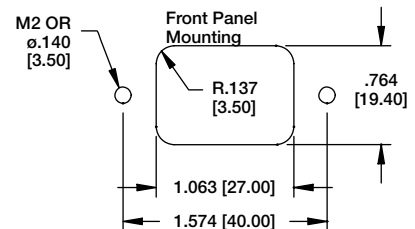
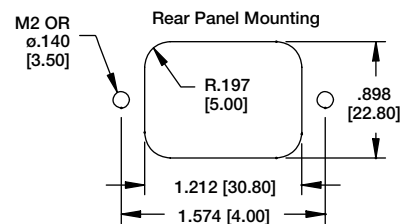
IEC-A SCREW ON PANEL RIGHT ANGLE PCB MOUNT



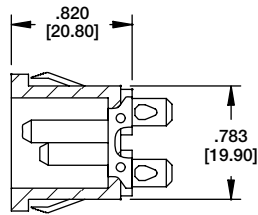
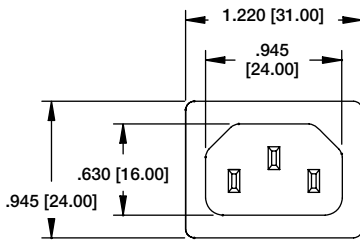
Recommended
PCB Layout



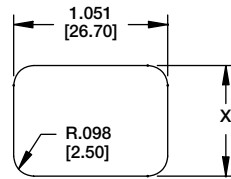
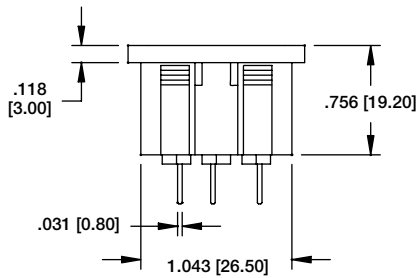
IEC-A-4



IEC-C UNIVERSAL PANEL SNAP



IEC-C-1

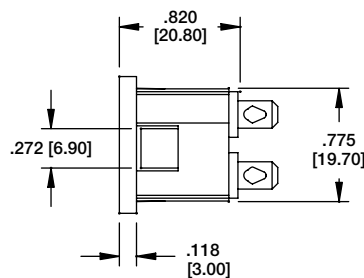
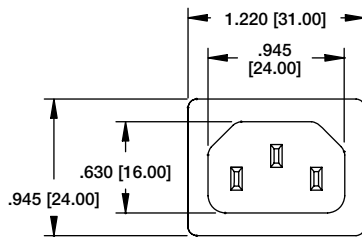


**Recommended Panel
Thickness: 0.8mm - 3.0mm**

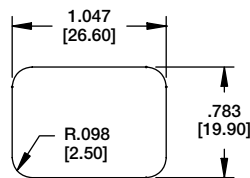
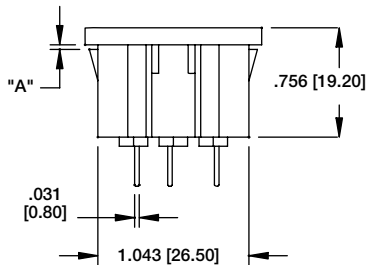
PANEL THICKNESS	DIM X
.031-.039 [0.8-1.0]	.780 [19.8]
.039-.059 [1.0-1.5]	.784 [19.9]
.079-.119 [2.0-3.0]	.788 [20.0]

TERMINAL OPTIONS			
1	2	3	5
.187 Q.C.	.250 Q.C.	.157 Solder	.098 Solder

IEC-C DEDICATED PANEL SNAP



IEC-C-1-150



**Recommended
Panel Cut-Out**

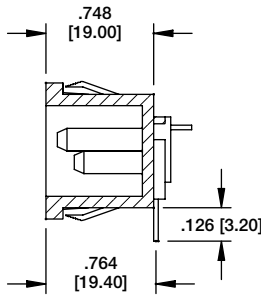
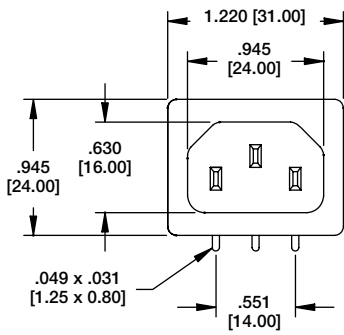
PANEL THICKNESS	PART NUMBER	DIM "A"
0.8mm	IEC-C-X-080	.031 [0.80]
1.5mm	IEC-C-X-150	.059 [1.50]
3.0mm	IEC-C-X-300	.118 [3.00]
4.0mm	IEC-C-X-400	.157 [4.00]

Replace X with terminal option below

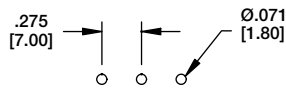
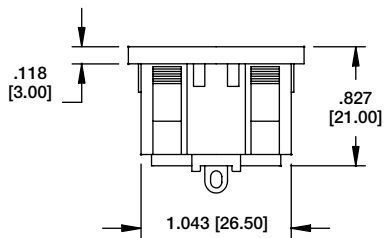
TERMINAL OPTIONS			
1	2	3	5
.187 Q.C.	.250 Q.C.	.157 Solder	.098 Solder

IEC-J

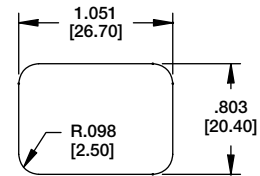
UNIVERSAL PANEL SNAP RIGHT ANGLE PCB MOUNT



IEC-J-4



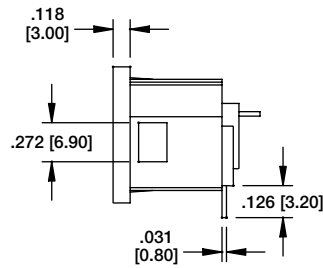
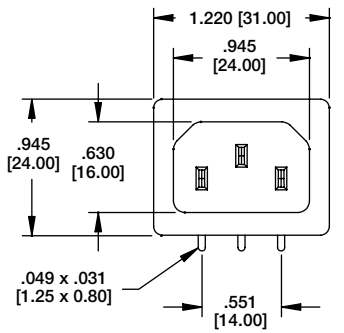
Recommended PCB
Layout



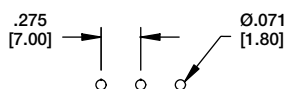
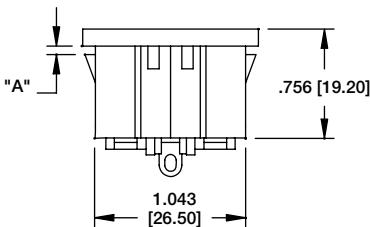
Recommended Panel
Thickness: 0.80 - 3.0mm

IEC-J

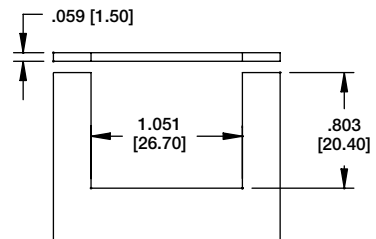
DEDICATED PANEL SNAP RIGHT ANGLE PCB MOUNT



IEC-J-4-150



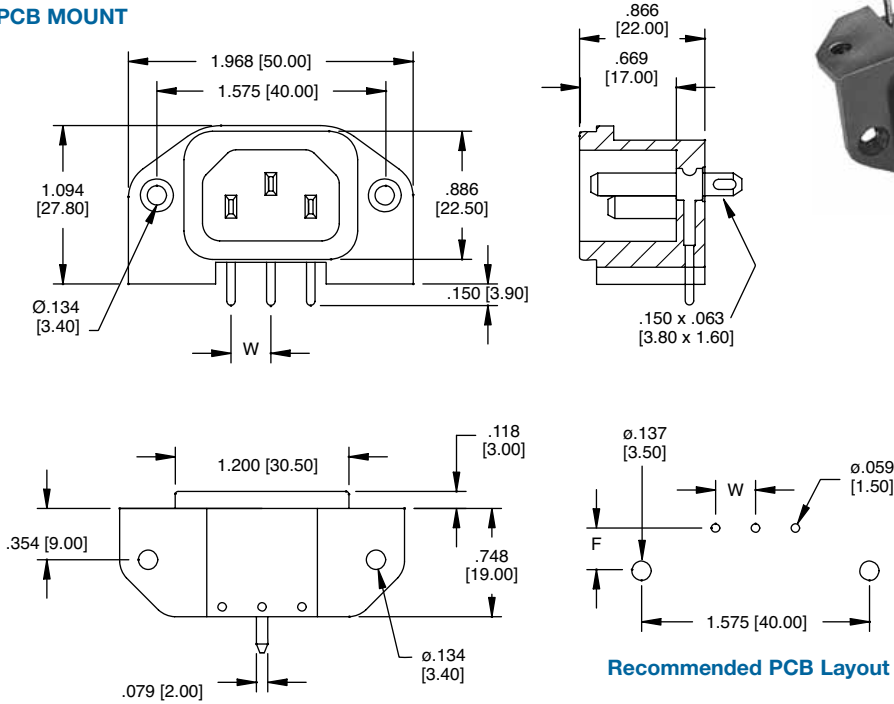
Recommended PCB
Layout



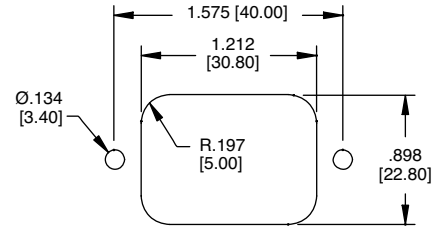
Recommended Panel Cut-Out

PANEL THICKNESS	PART NUMBER	DIM "A"
0.8mm	IEC-J-4-120	.047 [1.20]
1.5mm	IEC-J-4-150	.059 [1.50]
3.0mm	IEC-J-4-200	.079 [2.00]
4.0mm	IEC-J-4-300	.118 [3.00]

IEC-E FLANGED RIGHT ANGLE PCB MOUNT



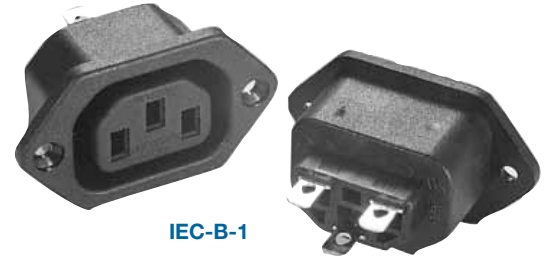
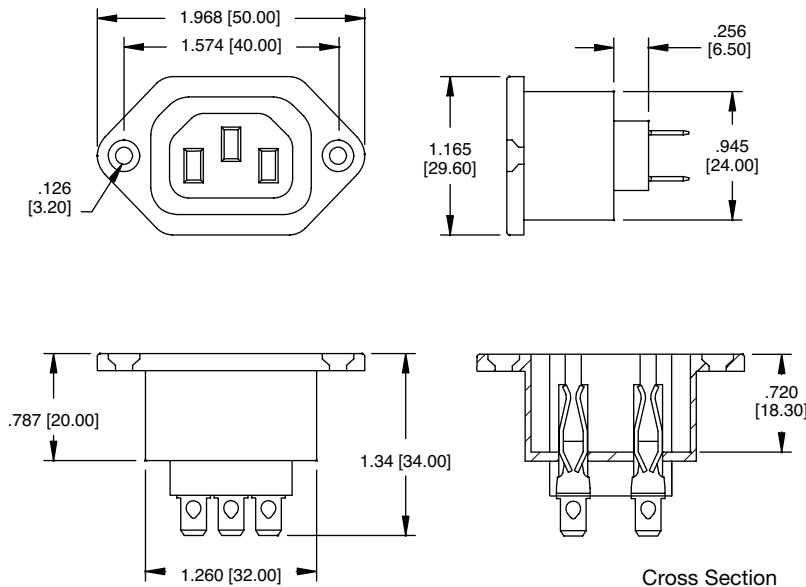
IEC-EW-4



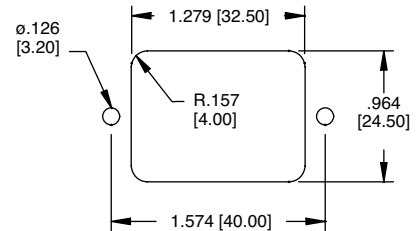
Recommended Panel Cut-Out

DIMENSIONAL		
PART NO.	F	W
IEC-EW	.287 [7.30]	.276 [7.00]
IEC-EX	.287 [7.30]	.358 [9.10]
IEC-EY	.382 [9.70]	.276 [7.00]
IEC-EZ	.382 [9.70]	.358 [9.10]

IEC-B FLANGED SCREW ON PANEL MOUNT



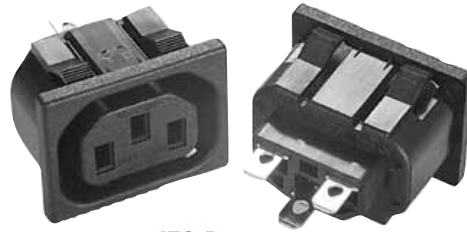
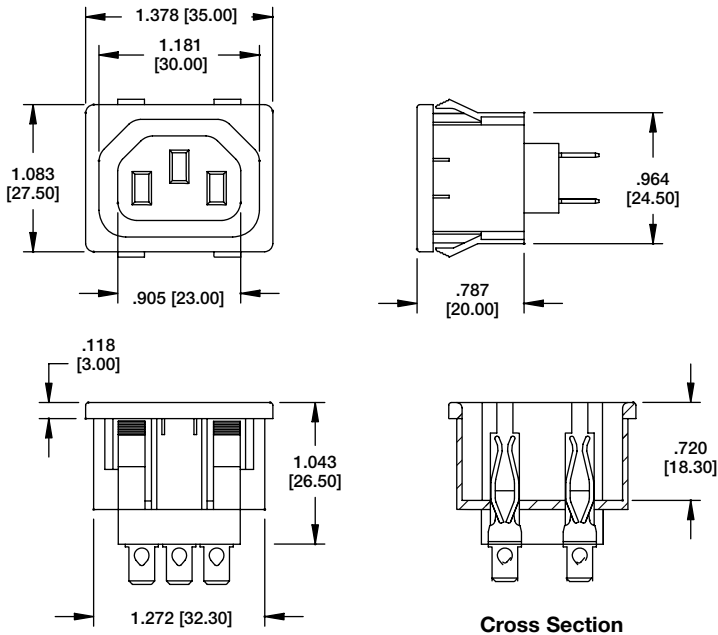
IEC-B-1



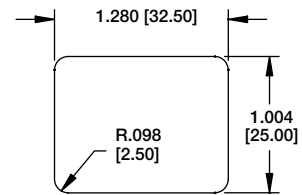
Recommended Panel Cut-Out

TERMINAL OPTIONS		
1	2	3
.187 Q.C.	.250 Q.C.	.157 Solder

IEC-D UNIVERSAL PANEL SNAP

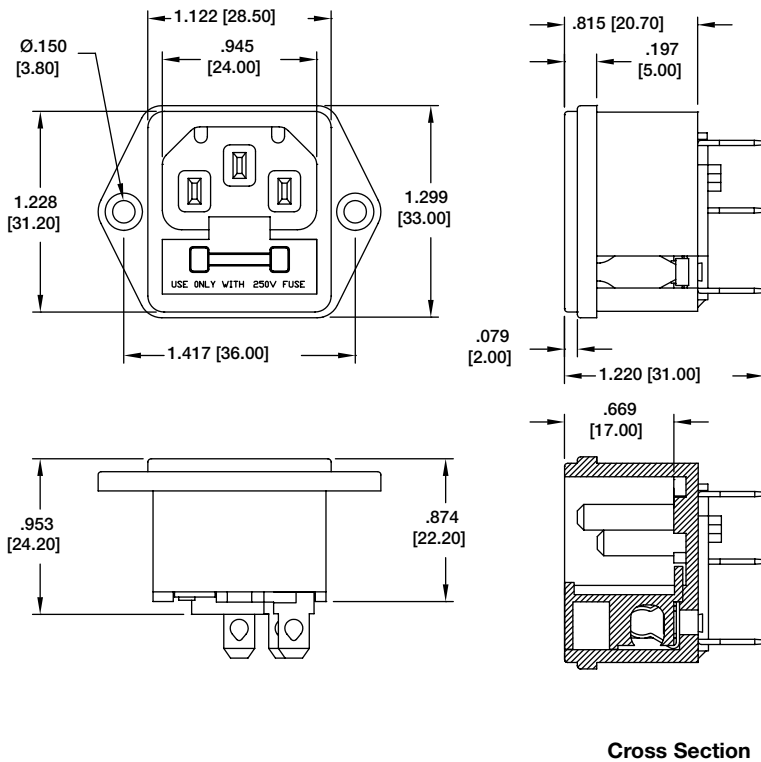


IEC-D-1



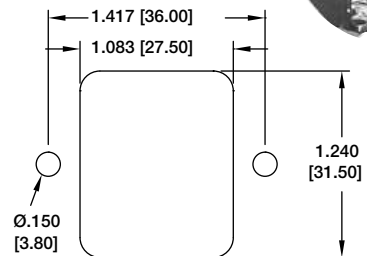
Recommended Panel Thickness:
0.8mm - 3.0mm

TERMINAL OPTIONS		
1	2	3
.187 Q.C.	.250 Q.C.	.157 Solder



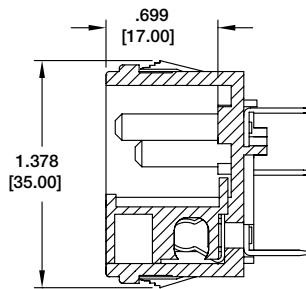
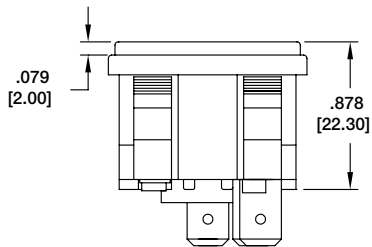
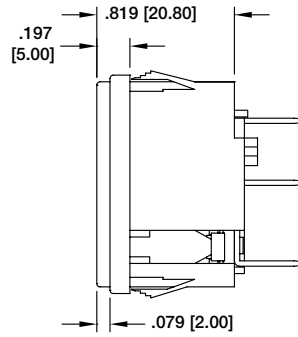
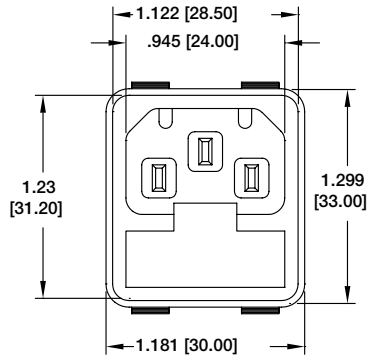
IEC-F FUSED, SCREW ON PANEL MOUNT

IEC-F-1



Recommended Panel Cut-Out

TERMINAL OPTIONS	
1	2
.187 Q.C.	.250 Q.C.



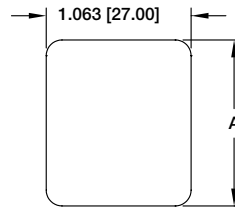
Cross Section

PANEL THICKNESS	DIM X
.031-.071 [0.8-1.8]	1.240 [31.50]
.075-.126 [1.9-3.2]	1.248 [31.70]



IEC-G-1

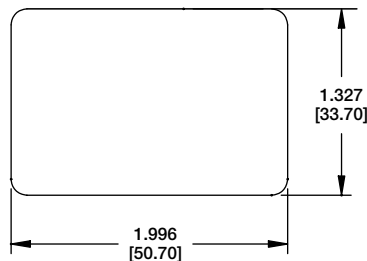
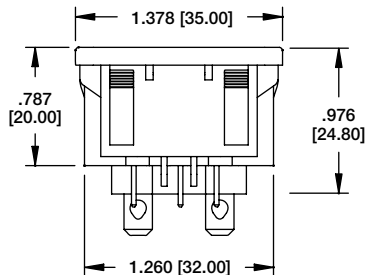
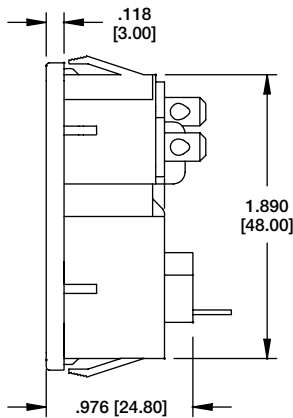
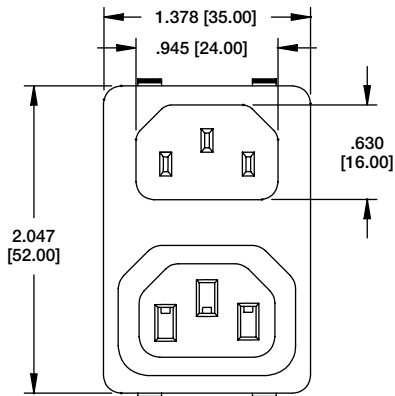
IEC-G
FUSED WITH UNIVERSAL
PANEL SNAP



PANEL THICKNESS	DIMENSIONS	
	A	
.031-.071 [0.80-1.80]	1.240 [31.50]	
.075-.126 [1.90-3.20]	1.248 [31.70]	

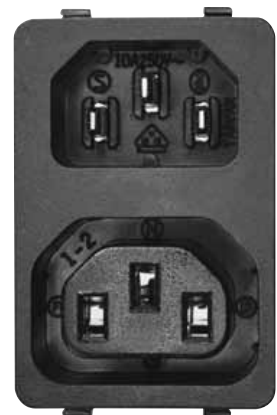
Recommended Panel Cut-Out

TERMINAL OPTIONS		
1	2	5
.187 Q.C.	.250 Q.C.	.157 Solder

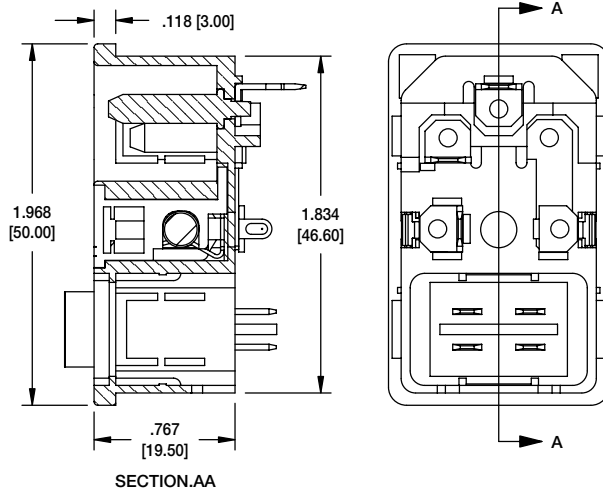
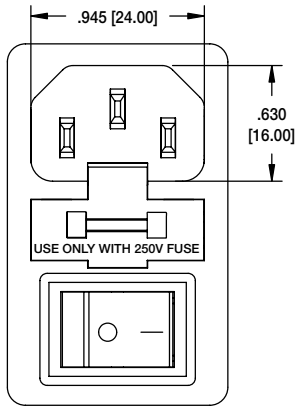


Recommended Panel Cut-Out

IEC-HS
FUSED INLET & OUTLET
WITH UNIVERSAL
PANEL SNAP

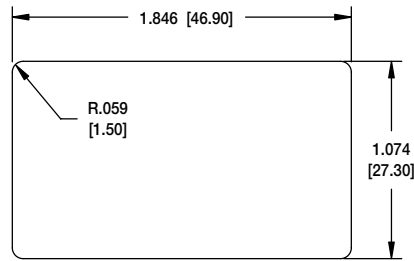
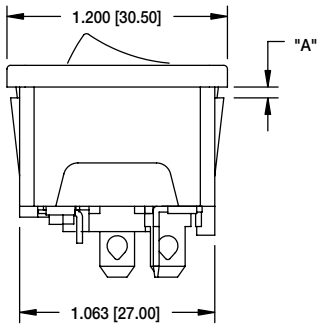


IEC-HS-1



IEC-GS-1
FUSED INLET WITH SWITCH,
SNAP IN PANEL MOUNT

PART NUMBER	DIM "A"
IEC-GS-1-100	.039 [1.00]
IEC-GS-1-150	.059 [1.50]
IEC-GS-1-200	.079 [2.00]

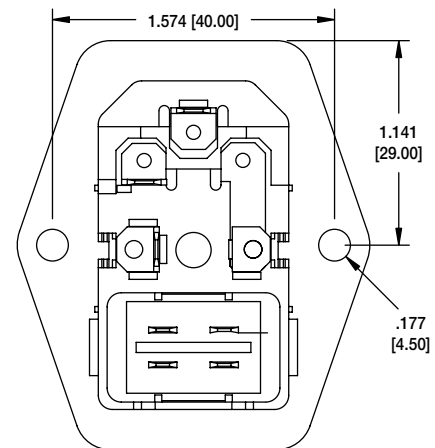
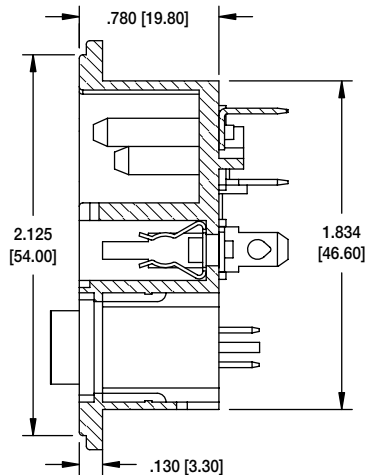
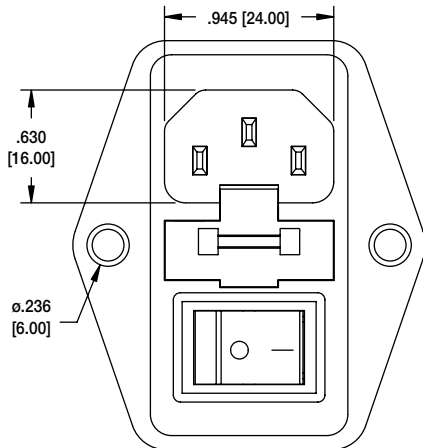


Recommended Panel Cut-Out

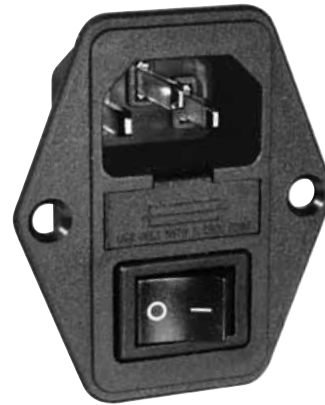
IEC-GS-1-100



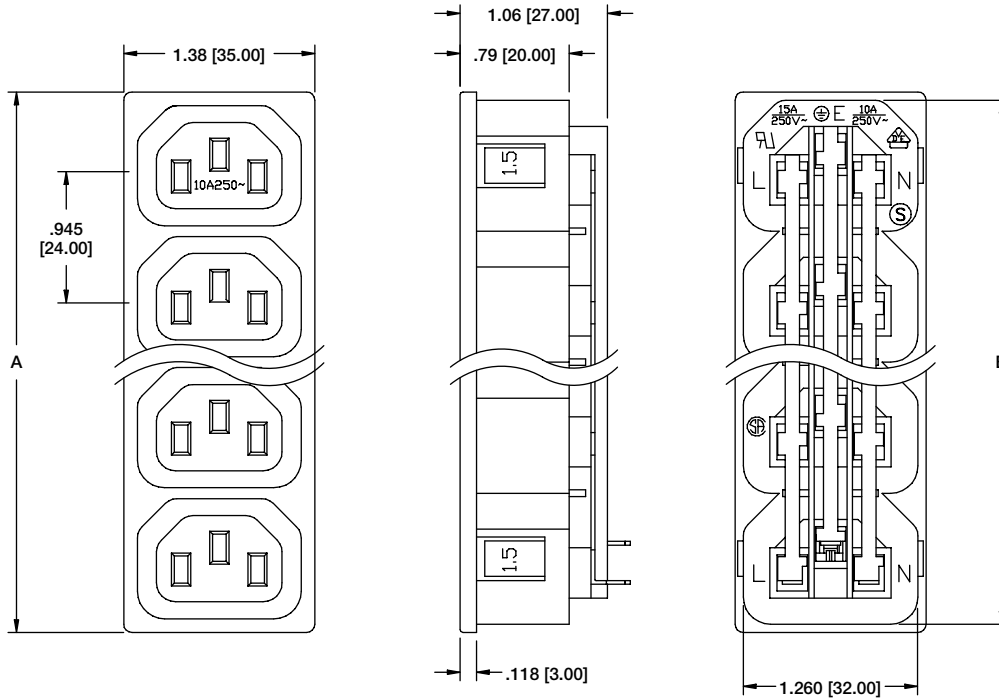
IEC-FS-1
FUSED INLET WITH SWITCH,
SCREW ON PANEL MOUNT



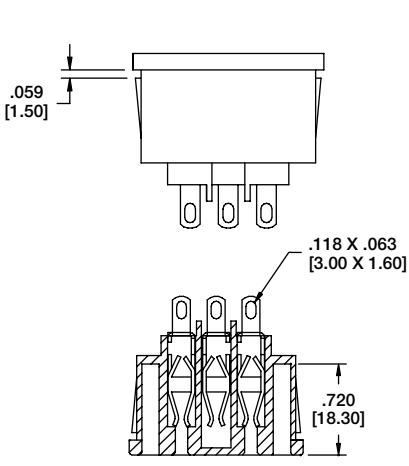
IEC-FS-1



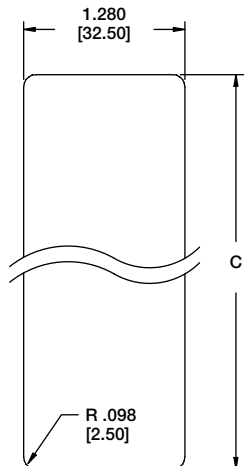
IEC-D-S
STACKED OUTLETS WITH
DEDICATED PANEL SNAPS



2 THRU 7 PORTS AVAILABLE



Cross Section



Recommended Panel Cut-Out



IEC-D-S4-150

DIMENSIONS				
PART NUMBER	PORTS	A	B	C
IEC-D-S2-150	2	2.007 [51.00]	1.890 [48.00]	1.901 [48.30]
IEC-D-S3-150	3	2.953 [75.00]	2.835 [72.00]	2.846 [72.30]
IEC-D-S4-150	4	3.897 [99.00]	3.780 [96.00]	3.791 [96.30]
IEC-D-S5-150	5	4.842 [123.00]	4.724 [120.00]	4.736 [120.30]
IEC-D-S6-150	6	5.787 [147.00]	5.670 [144.00]	5.681 [144.30]
IEC-D-S7-150	7	6.732 [171.00]	6.614 [168.00]	6.626 [168.30]

*PART NUMBERS SHOWN ARE FOR 1.5mm PANEL THICKNESS. CONSULT FACTORY FOR OTHER PANEL THICKNESSES REQUIREMENTS