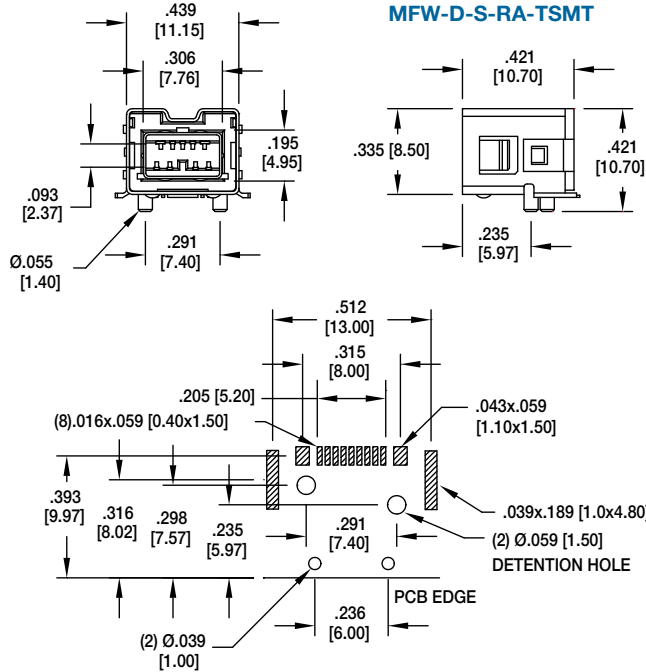


MINI IEEE 1394, RIGHT ANGLE, SMT



MFW-D-S-RA-TSMT

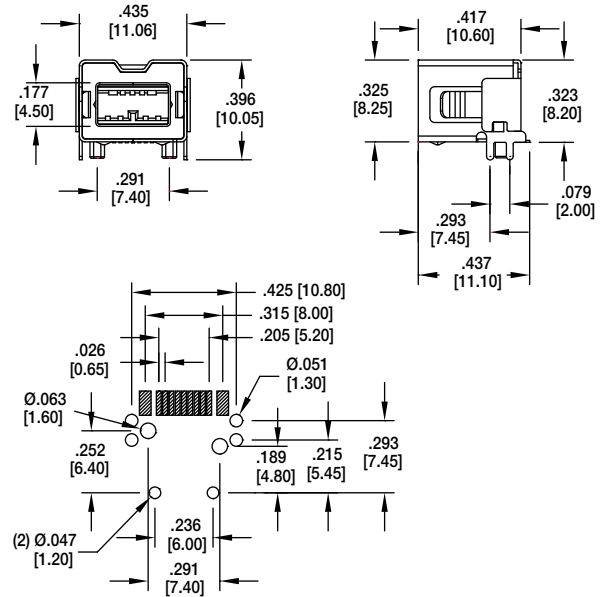


Recommended PCB Layout

MINI IEEE 1394, RIGHT ANGLE, SMT



MFW-D-S-RA-SMT-2

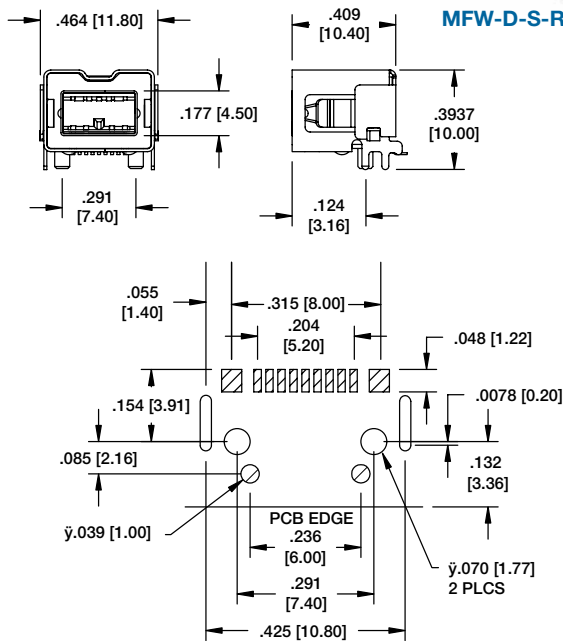


Recommended PCB Layout

MINI IEEE 1394, RIGHT ANGLE, SMT

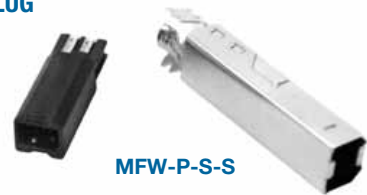


MFW-D-S-RA-SMT-2A



**Recommended PCB Layout
(Bilingual)**

MINI IEEE 1394, PLUG



MFW-P-S-S

