

INTRODUCTION:

Adam Tech right angle PCB SCSI II / III connectors are a popular high density interface for many I/O applications requiring a miniature connector. Offered in 20, 26, 28, 40, 50, 68, 80, 100 and 120 positions they are a good choice for high density compact applications. They feature a flat leaf and fork contact design and a one touch, locking receptacle/plug combination. Adam Tech connectors are manufactured with precision stamped contacts offering a choice of contact plating and a wide selection of mating and mounting options. They are ideal for most compact electronic applications.

FEATURES:

- Conforms to SCSI II standards
- One touch Locking Receptacle and Plug
- Blade contact with Blanked terminal
- Industry standard compatibility
- Durable metal shell design
- Precision formed bifurcated contacts
- Variety of Mating and mounting options

MATING CONNECTORS:

Adam Tech SCSI II / III connectors and all industry standard SCSI II / III connectors.

SPECIFICATIONS:

Material:

Insulator: PBT, Glass filled, rated UL94V-0
 Insulator Color: Black
 Contacts: Phosphor Bronze
 Metal backshell: Zinc, Nickel Plated

Contact Plating:

Gold over nickel underplate on mating area, Tin over Copper underplate on tails

Electrical:

Operating Voltage: 250V AC
 Current Rating: 1 Amps max.
 Contact Resistance: 35 mΩ max. initial
 Insulation Resistance: 500 MΩ min.
 Dielectric Withstanding Voltage: 500V AC for 1 minute

Mechanical:

Insertion force: 5.3 oz max.
 Withdrawal force: 1.0 oz min.
 Durability: 100 cycles

Temperature Rating:

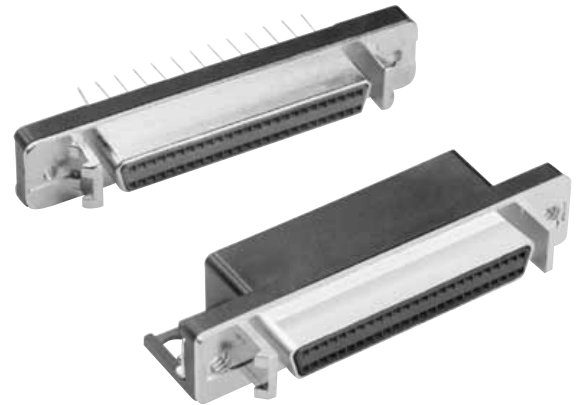
Operating Temperature: -55°C ~ +105°C

PACKAGING:

Anti-ESD plastic trays

APPROVALS AND CERTIFICATIONS:

UL Recognized & CSA Certified,
 File no. E224053



ORDERING INFORMATION



SERIES INDICATOR
S2A = .050" SCSI II/III Connector

MOUNTING ANGLE

SR = Socket, Right Angle Mount

SV = Socket, Vertical Mount

THREADED MOUNTING HOLES

1 = #4-40 threaded holes

2 = #2-56 threaded holes

3 = M2.6 thread holes

BOARD MOUNTING OPTIONS

TFA = Flange with #4-40 threaded holes

TFB = Flange with #2-56 threaded holes

TFC = .125 Dia. thru-holes

TFD = Flange with M2.6 threaded holes

BL = Board locks (Right angle only)

MATING FACE MOUNTING OPTIONS

2 = Without latch blocks

3 = With latch blocks

POSITIONS

20, 26, 28, 40, 50, 60, 68, 80, 100, 120

