

ORDERING INFORMATION

MTJC

SERIES INDICATOR
MTJC = Modular Jack
 Coupler

8

HOUSING SIZE = 8

6

POSITIONS FILLED
 4, 6, or 8

0

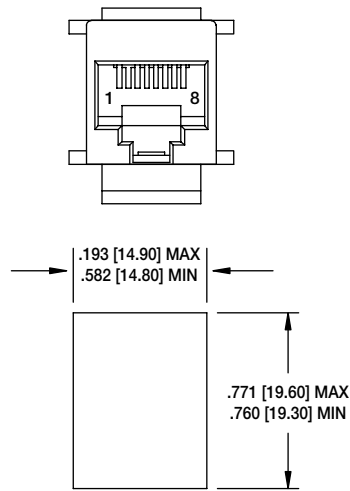
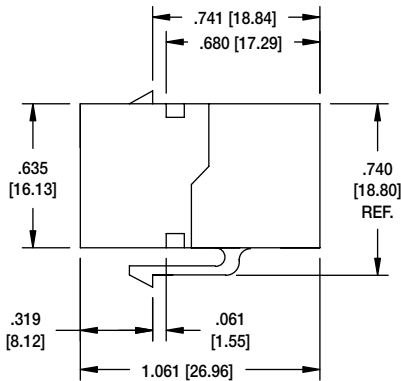
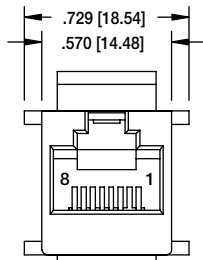
PLATING
X = Gold Flash
0 = 15 μ in gold
1 = 30 μ in gold
2 = 50 μ in gold

B

INSULATOR COLOR
B = Black **Y** = Yellow
W = White **R** = Red
IV = Ivory **G** = Green
GY = Gray **BL** = Blue

OPTIONS:

Add designator to end of part number
S = Shielded



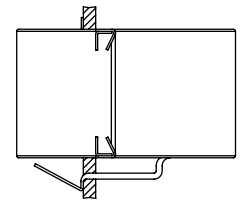
MTJC-88XB
PLASTIC HOUSING



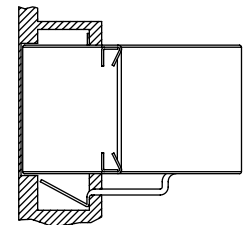
MTJC-88XB

RECOMMENDED PANEL CUT-OUT
PANEL THICKNESS .062 [1.57]

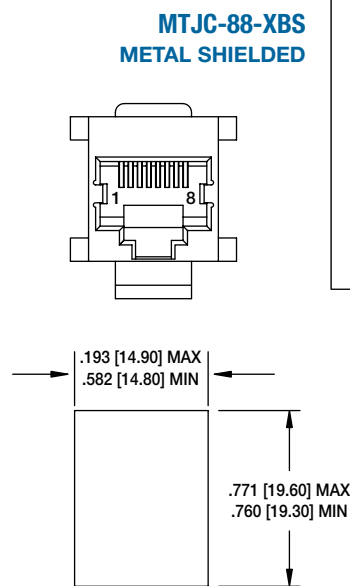
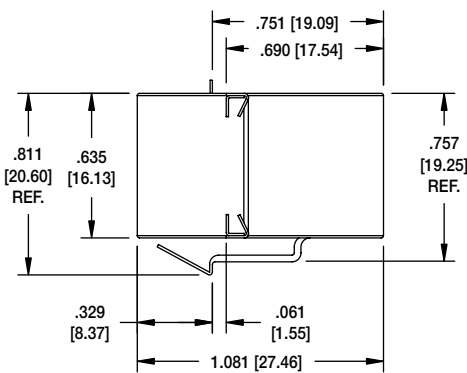
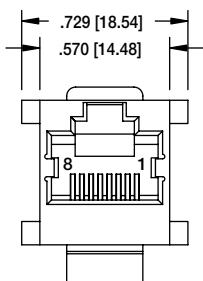
MTJC Couplers can be used in either of the following mounting applications



Single Wall Plate Mounting



Double Wall Plate Mounting



MTJC-88XB-S
METAL SHIELDED



MTJC-88XB-S

RECOMMENDED PANEL CUT-OUT
PANEL THICKNESS .062 [1.57]