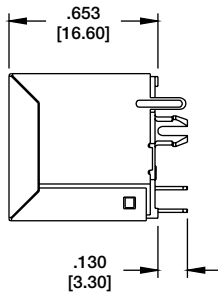
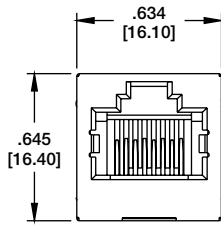


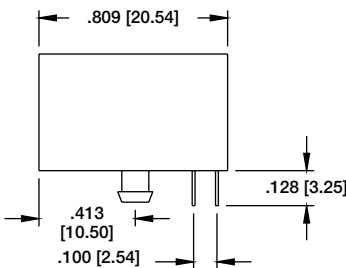
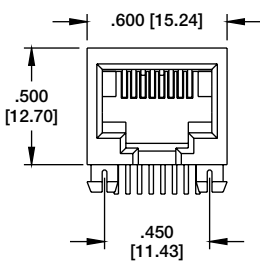
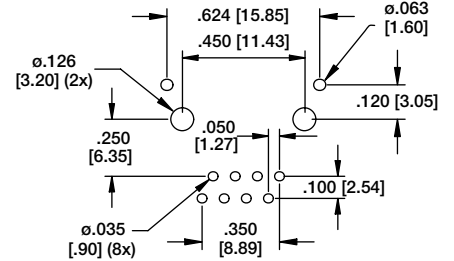
Ordering Information pg. 9

TYPE A
CAT. 5, TOP ENTRY
8P8C



MTJ-88AX1-FSE

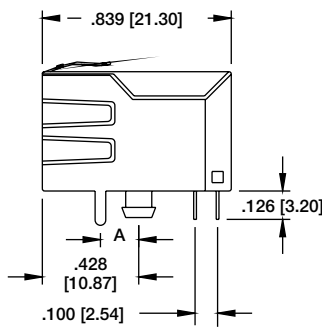
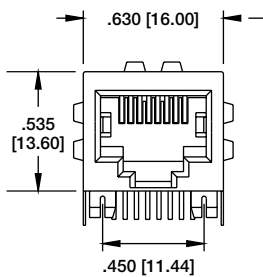
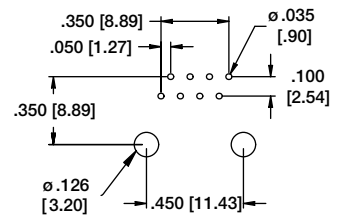
Recommended PCB Layout



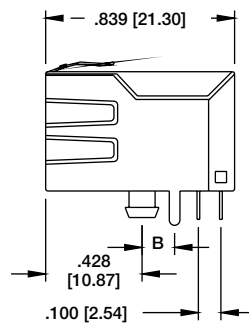
MTJ-88TX1

TYPE T
CAT. 5, SIDE ENTRY
8P8C

Recommended PCB Layout



FSA, FSB & FSE



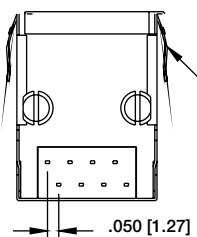
FSD = .120 [3.05]



MTJ-88TX1-FSE-PG

Available with or without panel ground tabs

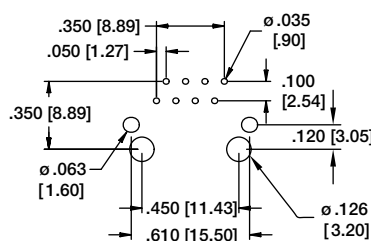
TYPE T
CAT. 5, SHIELDED
8P8C



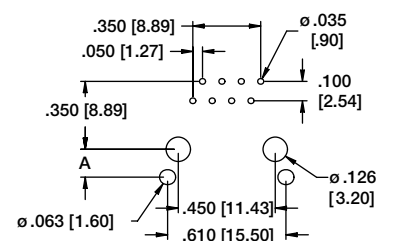
OPTIONAL
PANEL GROUND TABS

Dimensions A & B
SHIELD PIN LOCATION OPTIONS
FSA OPTION: A = .170 [4.32]
FSB OPTION: A = .144 [3.66]
FSE OPTION: A = .120 [3.05]
FSD OPTION: B = .120 [3.05]

PCB Layout (FSD)

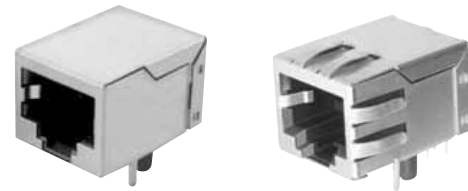
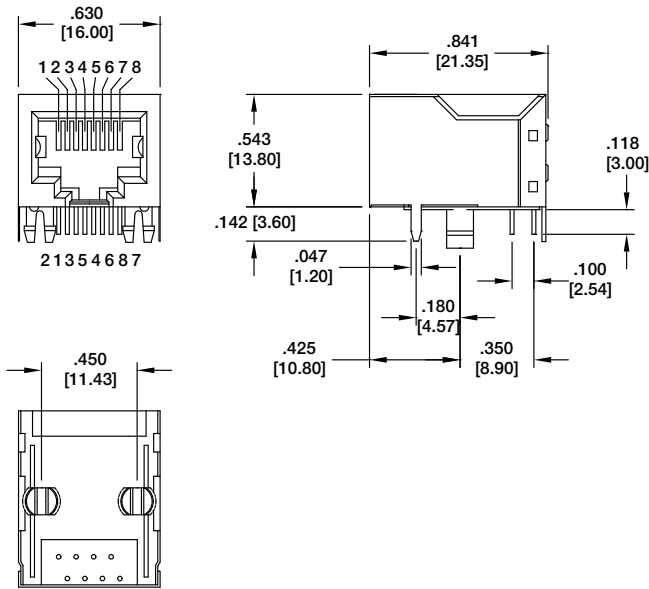


PCB Layout (FSA, FSB & FSE)



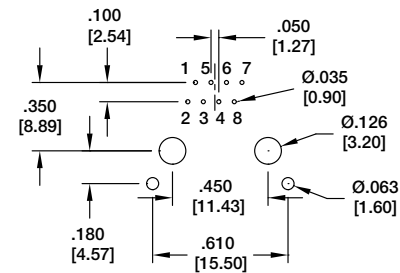
TYPE T

CAT. 5e, SHIELDED



MTJ-88TX1-FSG-C5e

MTJ-88TX1-FSG-PG-C5e

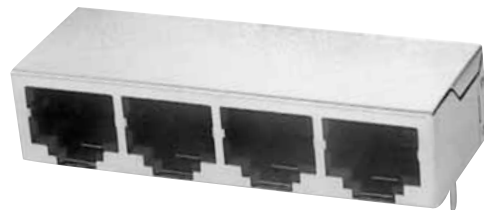
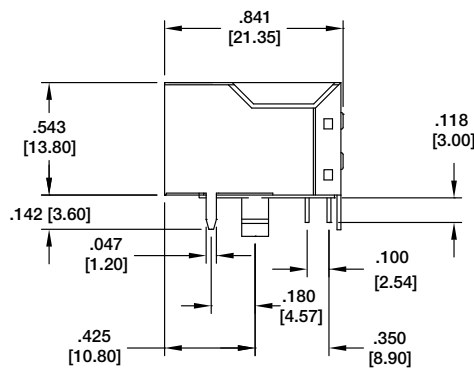
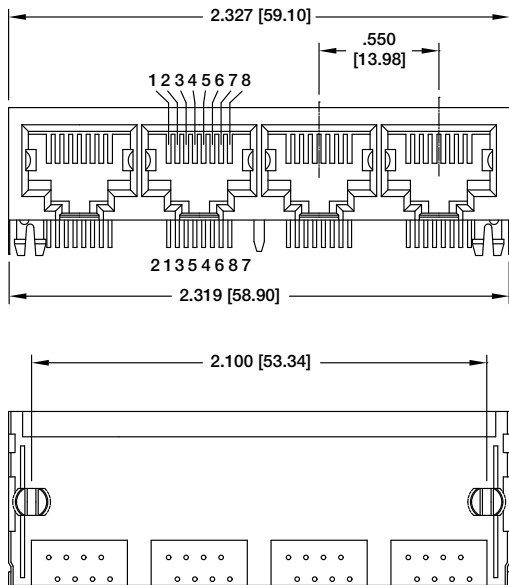


Recommended PCB Layout

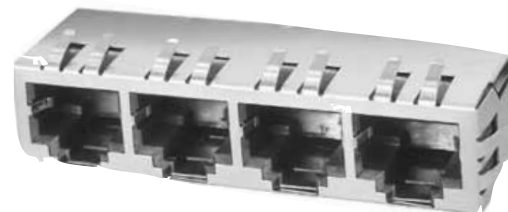
TYPE T

GANGED

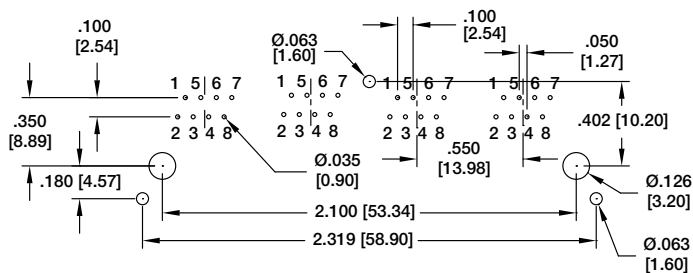
CAT. 5e, SHIELDED



MTJG-4-88TX1-FSG-C5e

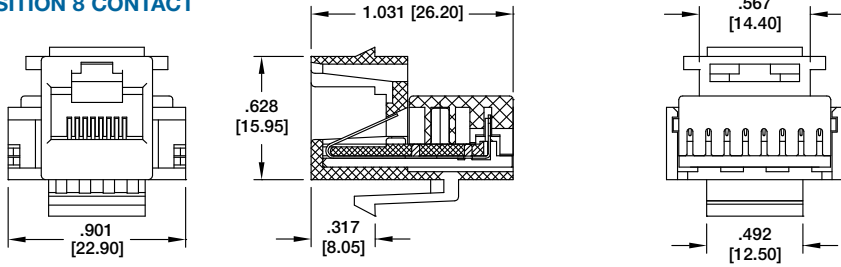


MTJG-4-88TX1-FSG-PG-C5e



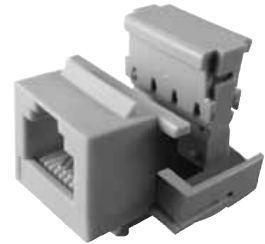
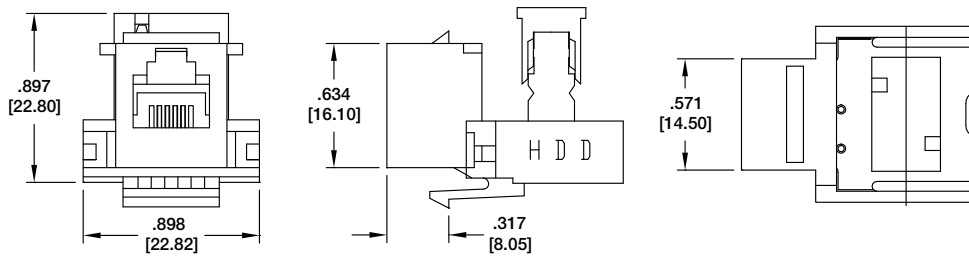
Recommended PCB Layout

**CAT. 3 KEYSTONE JACK
8 POSITION 8 CONTACT**



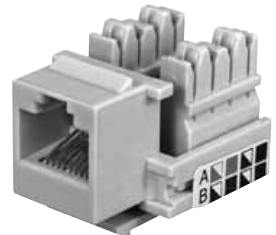
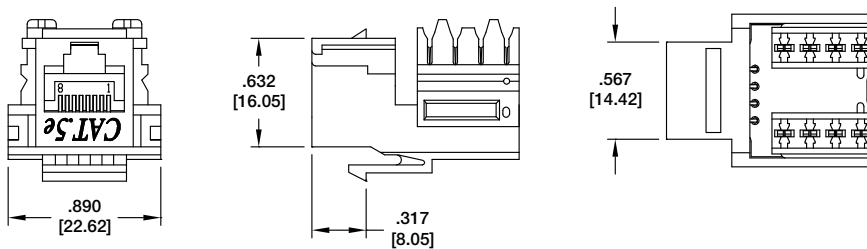
MTJK-88-10

**CAT. 3 KEYSTONE JACK
6 POSITION 4 CONTACT**



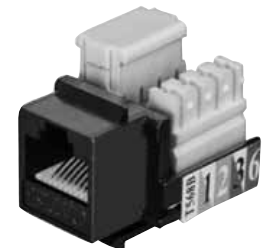
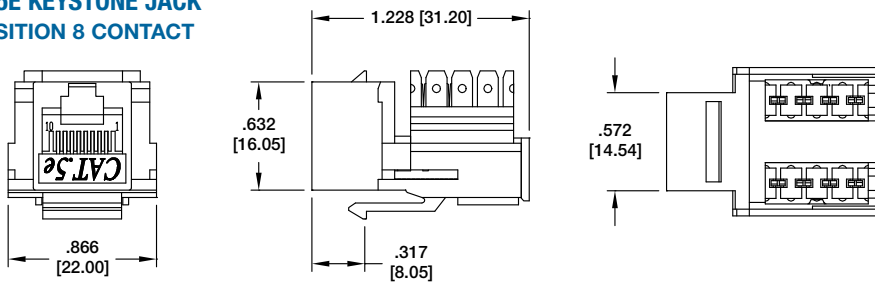
MTJK-64-29

**CAT. 5E KEYSTONE JACK
8 POSITION 8 CONTACT**



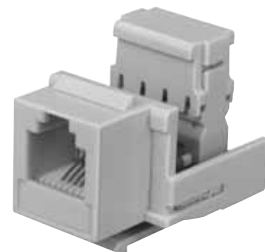
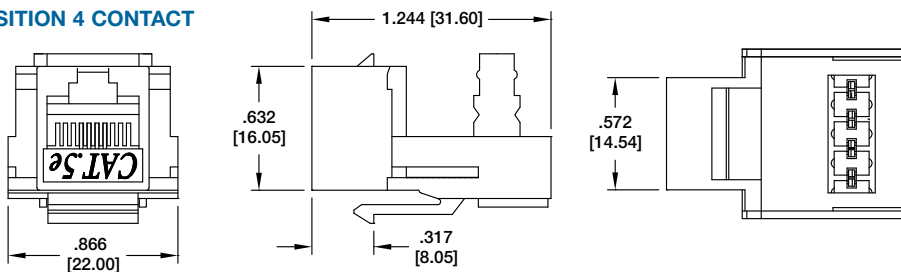
MTJK-88-02-C5E

**CAT. 5E KEYSTONE JACK
8 POSITION 8 CONTACT**



MTJK-88-05-C5E

**CAT. 5E KEYSTONE JACK
8 POSITION 4 CONTACT**



MTJK-84-01-C5E