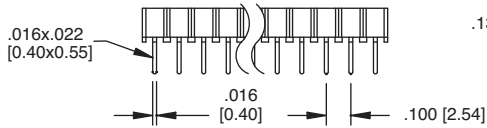
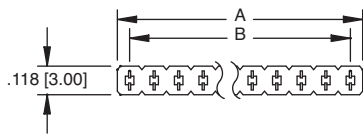


Ordering Information pg. 307

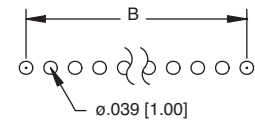


A = .100 [2.54] X No. of Positions  
B = .100 [2.54] X No. of Spaces

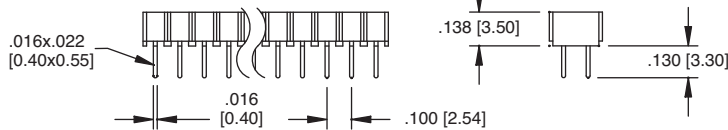
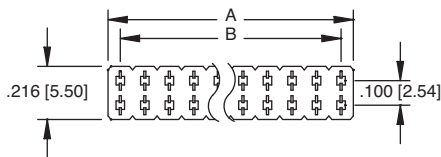


RSVL-1A-18-G

RSVL-1A



Recommended PCB Layout

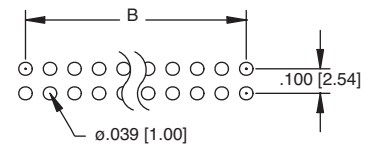


A = .100 [2.54] X No. of Positions Per Row  
B = .100 [2.54] X No. of Spaces

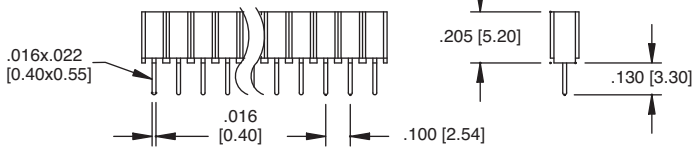
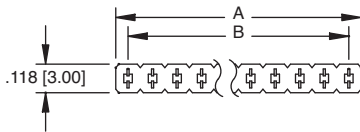


RSVL-2A-38-G

RSVL-2A



Recommended PCB Layout

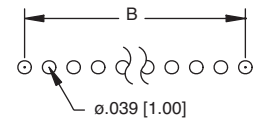


A = .100 [2.54] X No. of Positions  
B = .100 [2.54] X No. of Spaces

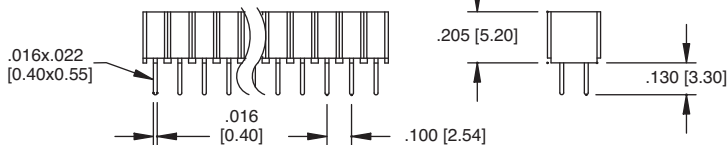
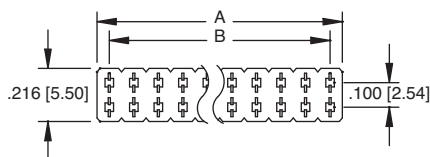


RSVL-1B-18-G

RSVL-1B



Recommended PCB Layout

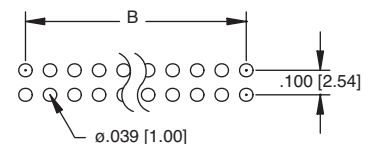


A = .100 [2.54] X No. of Positions Per Row  
B = .100 [2.54] X No. of Spaces



RSVL-2B-36-G

RSVL-2B



Recommended PCB Layout