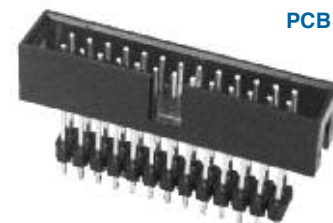
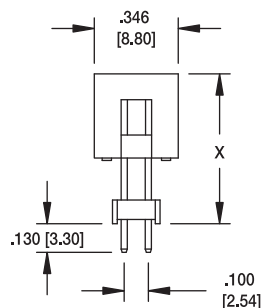
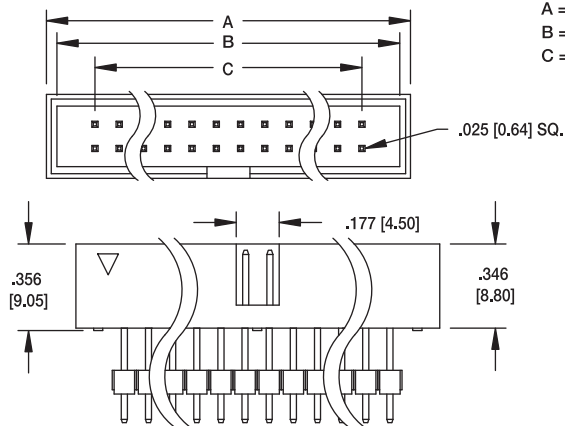


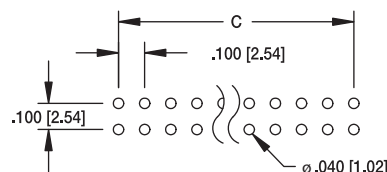
BHRE

**ELEVATED STRAIGHT
PCB MOUNT**

A = .100 [2.54] X No. of Positions /2 + .300 [7.62]
 B = .100 [2.54] X No. of Positions /2 + .212 [5.40]
 C = .100 [2.54] X No. of Spaces



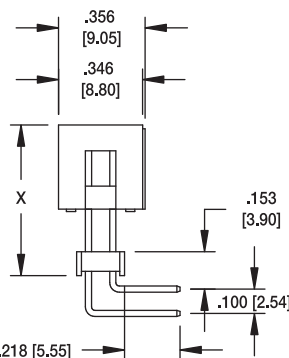
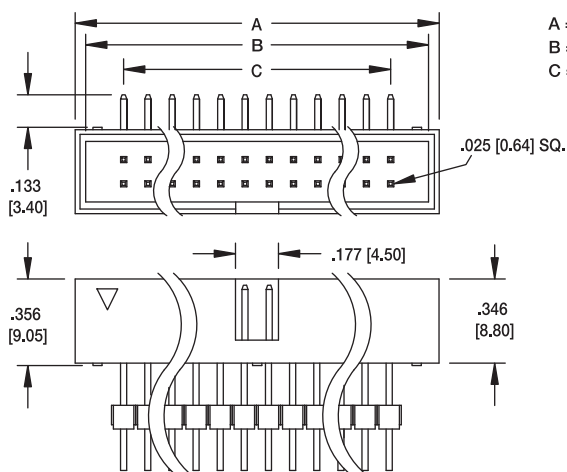
BHRE-26-VUA-477



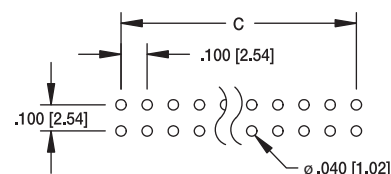
BHRE

**ELEVATED RIGHT ANGLE
PCB MOUNT**

A = .100 [2.54] X No. of Positions /2 + .300 [7.62]
 B = .100 [2.54] X No. of Positions /2 + .212 [5.40]
 C = .100 [2.54] X No. of Spaces



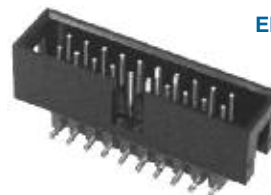
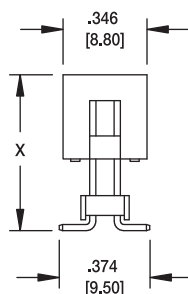
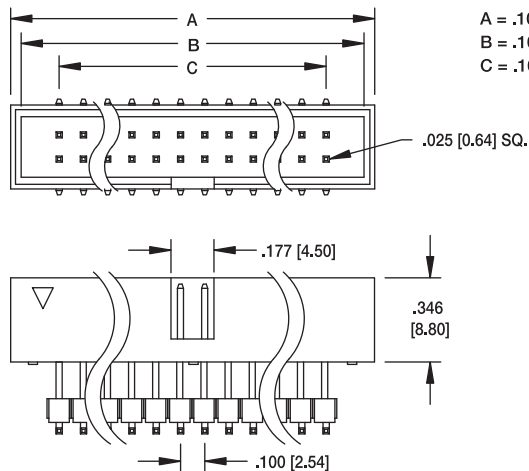
BHRE-26-HUA-477



BHRE

ELEVATED SMT

A = .100 [2.54] X No. of Positions /2 + .300 [7.62]
 B = .100 [2.54] X No. of Positions /2 + .212 [5.40]
 C = .100 [2.54] X No. of Spaces



BHRE-20-VU-SMT-477

