

### INTRODUCTION:

Adam Tech BHR Series .100" Box Headers are a dual row shrouded header for use with dual row IDC female socket connectors. Our low profile, space saving design has a center slot for the socket's polarization bump. Adam Tech's Box Headers are available in Straight PCB Mount, Right Angle PCB Mount and SMT Mounting. Plating options include choice of Gold, Tin or Selective Gold. SMT versions are manufactured with a Hi-Temp insulator. Additional options include latches and custom pin lengths.

### FEATURES:

- Superior low profile design
- Slot for IDC socket Polarization bump
- Straight PCB, Right Angle PCB and SMT versions
- Gold, Tin or Selective Gold plating
- Options include Elevated types and integral latches
- Hi-Temp insulator available

### MATING SOCKETS:

Adam Tech .100" X .100" dual row IDC sockets

### SPECIFICATIONS:

#### Material:

Insulator: PBT, glass reinforced, rated UL94V-0  
Optional Hi-Temp insulator: Nylon 6T, rated UL94V-0  
Insulator Color: Black (Gray optional)  
Contacts: Brass

#### Plating:

U = Gold flash (30u" optional) over nickel underplate  
SG = Gold flash (30u" optional) over nickel underplate on contact area, tin over copper underplate on tails.  
T = Tin over copper underplate overall

#### Electrical:

Operating voltage: 250V AC max.  
Current rating: 1 Amp max  
Contact resistance: 20 mΩ max. initial  
Insulation resistance: 5000 MΩ min.  
Dielectric withstanding voltage: 1000V AC for 1 minute

#### Mechanical:

Mating durability: 500 cycles min.

#### Temperature Rating:

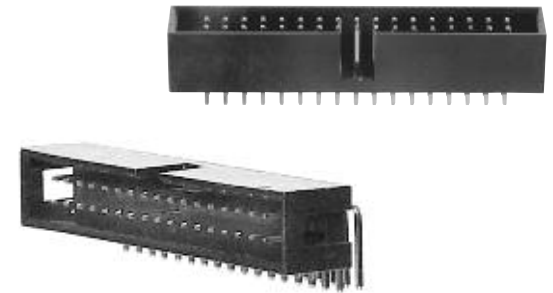
Operating temperature: -40°C to +105°C

### PACKAGING:

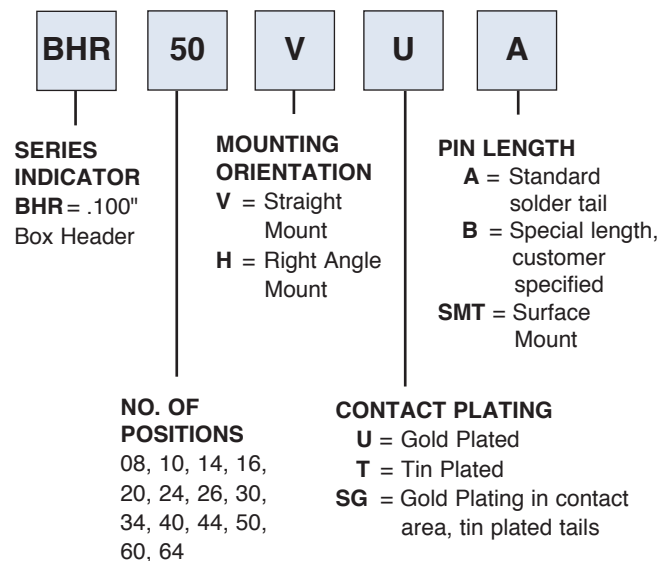
Anti-ESD plastic trays

### SAFETY AGENCY APPROVALS:

UL Recognized & CSA Certified, File no. E224053



### ORDERING INFORMATION



### OPTIONS:

Add designator(s) to end of part number  
**LL** = Box header with long latches  
**SL** = Box header with short latches  
**30** = 30 μin gold plating in contact area  
**GY** = Gray color insulator  
**HT** = Hi-Temp insulator for Hi-Temp soldering processes up to 260°C (Add this option for thru-hole products only.  
*All SMT products are manufactured with Hi-Temp insulators*)

$A = .100 [2.54] \times \text{No. of Positions} / 2 + .300 [7.62]$   
 $B = .100 [2.54] \times \text{No. of Positions} / 2 + .200 [5.08]$   
 $C = .100 [2.54] \times \text{No. of Spaces}$

**BHR**  
**STRAIGHT PCB MOUNT**

**BHR-34-VUA**

**Recommended PCB Layout**

$A = .100 [2.54] \times \text{No. of Positions} / 2 + .300 [7.62]$   
 $B = .100 [2.54] \times \text{No. of Positions} / 2 + .200 [5.08]$   
 $C = .100 [2.54] \times \text{No. of Spaces}$

**BHR**  
**RIGHT ANGLE PCB MOUNT**

**BHR-34-HUA**

**Recommended PCB Layout**

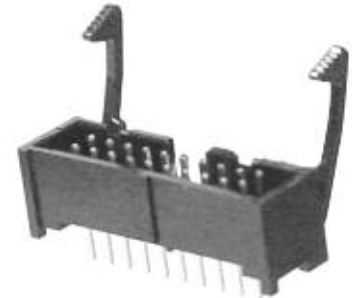
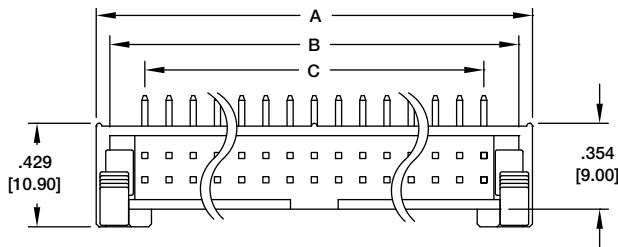
$A = .100 [2.54] \times \text{No. of Positions} / 2 + .300 [7.62]$   
 $B = .100 [2.54] \times \text{No. of Positions} / 2 + .200 [5.08]$   
 $C = .100 [2.54] \times \text{No. of Spaces}$

**BHR**  
**SURFACE MOUNT**

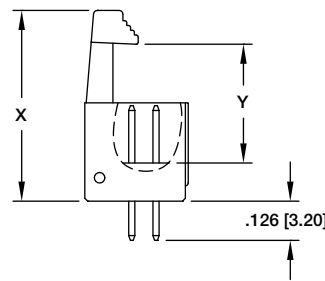
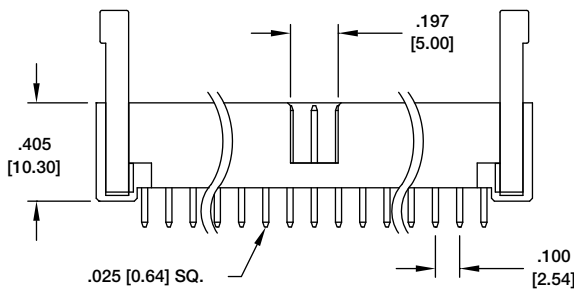
**BHR-30-VSG-SMT**

**Recommended PCB Layout**

**BHR  
STRAIGHT MOUNT BOX HEADER  
WITH LATCHES**

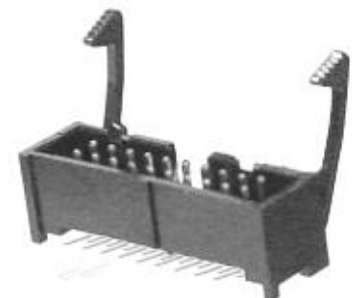
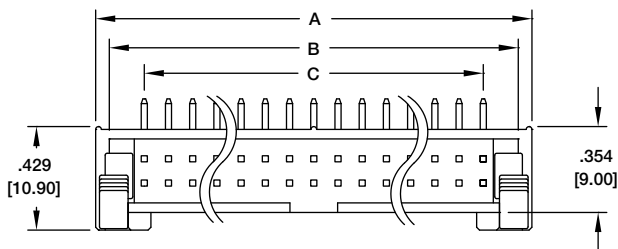


**BHR-34-VUA-LL**

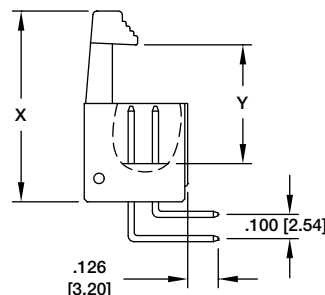
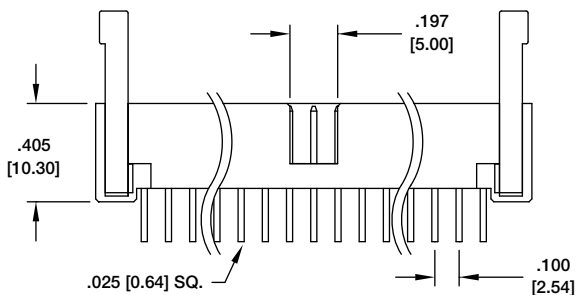


A = .100 [2.54] X No. of Positions / 2 + .301  
 B = .100 [2.54] X No. of Positions / 2 + .189  
 C = .100 [2.54] X No. of Positions / 2

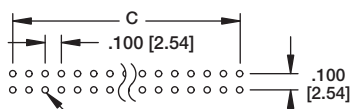
**BHR  
RIGHT ANGLE MOUNT BOX HEADER  
WITH LATCHES**



**BHR-34-HUA-LL**



A = .100 [2.54] X No. of Positions / 2 + .301  
 B = .100 [2.54] X No. of Positions / 2 + .189  
 C = .100 [2.54] X No. of Positions / 2



**Recommended PCB Layout**

| LATCH TYPE        | DIMENSIONS    |              |
|-------------------|---------------|--------------|
|                   | X             | Y            |
| LONG LATCH (-LL)  | 1.035 [26.30] | .575 [14.60] |
| SHORT LATCH (-SL) | .901 [22.90]  | .417 [10.60] |

## INTRODUCTION:

Adam Tech BHRE Series Elevated Box Headers provide all of the advantages of our standard Box Headers such as our Low Profile design, snug fit & polarized mating but have additional plastic insulators in place to stabilize rows of pins for stacking applications. This series is available in Straight, Right Angle & SMT mounting with standard or customer specified Stacking Heights and PCB tail lengths.

## FEATURES:

Elevated for Stacking applications  
Low Profile design  
Straight, Right Angle & SMT mounting options  
Standard or customer specified Stacking Heights & PCB tail lengths

## MATING SOCKETS:

Adam Tech .100" X .100" dual row IDC sockets

## SPECIFICATIONS:

### MATERIAL:

Insulator: PBT, glass reinforced, rated UL94V-0  
Optional Hi-Temp insulator: Nylon 6T, rated UL94V-0  
Insulator Color: Black (Gray optional)  
Contacts: Brass

### PLATING:

U = Gold flash (30u" optional) over nickel underplate  
SG = Gold flash (30u" optional) over nickel underplate on contact area, tin over copper underplate on tails.  
T = Tin over copper underplate overall

### ELECTRICAL:

Operating voltage: 250V AC max.  
Current rating: 1 Amp max  
Contact resistance: 20 mΩ max. initial  
Insulation resistance: 5000 MΩ min.  
Dielectric withstanding voltage: 1000V AC for 1 minute

### MECHANICAL:

Mating durability: 500 cycles min.

### TEMPERATURE RATING:

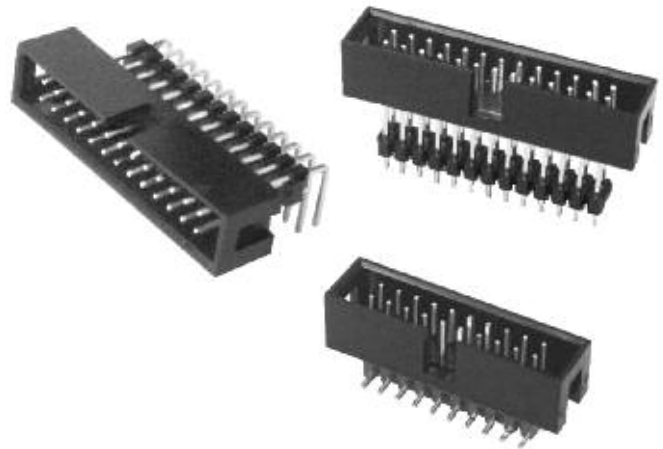
Operating temperature: -40°C to +105°C

### PACKAGING:

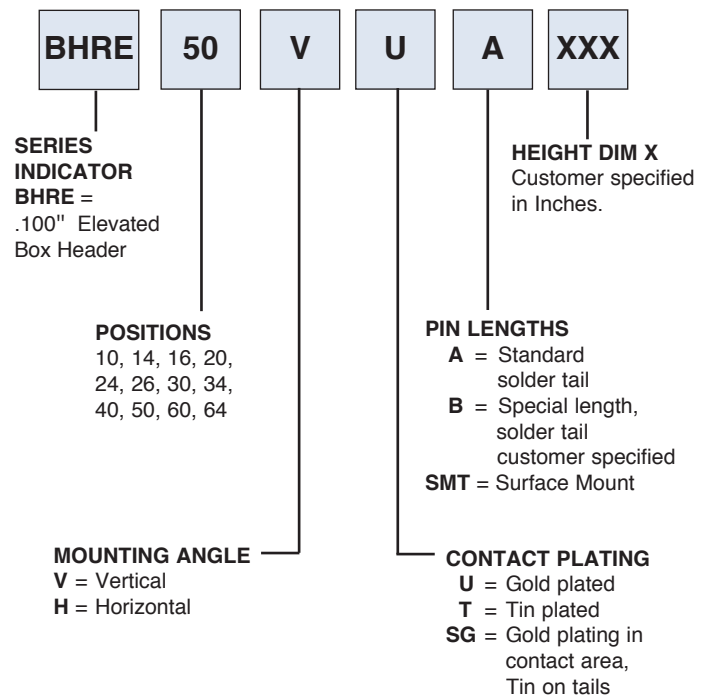
Anti-ESD plastic trays

### SAFETY AGENCY APPROVALS:

UL Recognized & CSA Certified, File no. E224053



## ORDERING INFORMATION



### OPTIONS:

Add designator(s) to end of part number

**30** = 30u" Gold on contact area

**GY** = Gray color insulator

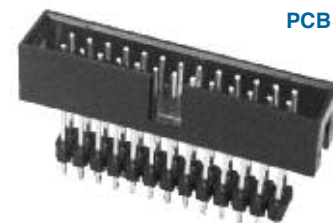
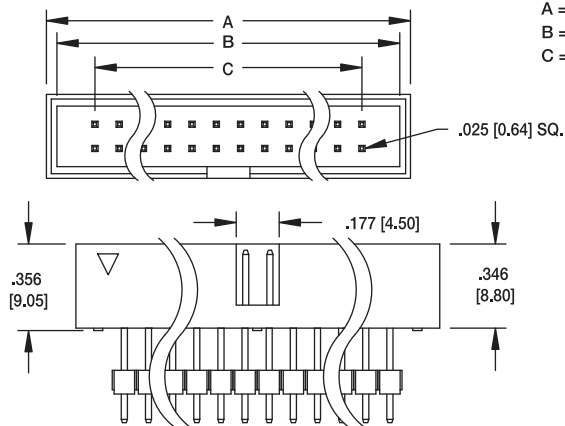
**HT** = Hi-Temp insulator for Hi-Temp soldering processes up to 260°C (Add this option for thru-hole products only.)

All SMT products are manufactured with Hi-Temp insulators)

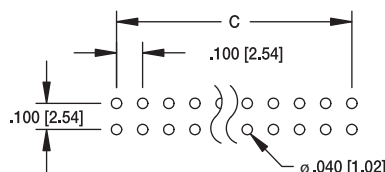
**BHRE**

**ELEVATED STRAIGHT  
PCB MOUNT**

A = .100 [2.54] X No. of Positions /2 + .300 [7.62]  
 B = .100 [2.54] X No. of Positions /2 + .212 [5.40]  
 C = .100 [2.54] X No. of Spaces



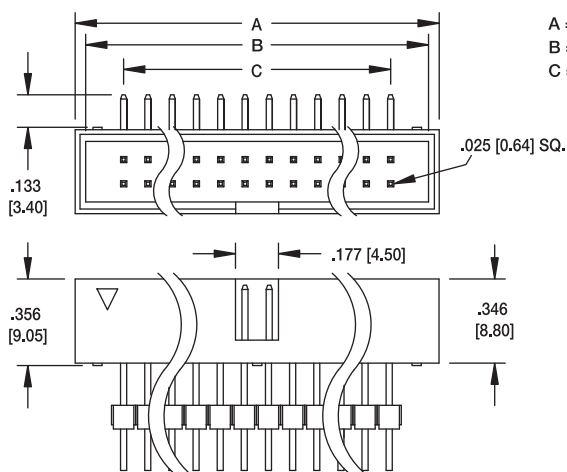
**BHRE-26-VUA-477**



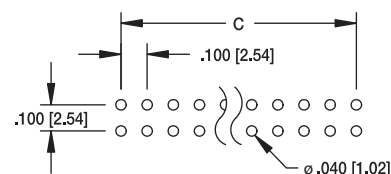
**BHRE**

**ELEVATED RIGHT ANGLE  
PCB MOUNT**

A = .100 [2.54] X No. of Positions /2 + .300 [7.62]  
 B = .100 [2.54] X No. of Positions /2 + .212 [5.40]  
 C = .100 [2.54] X No. of Spaces



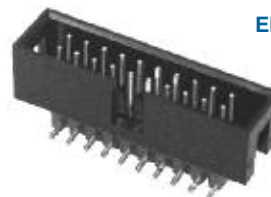
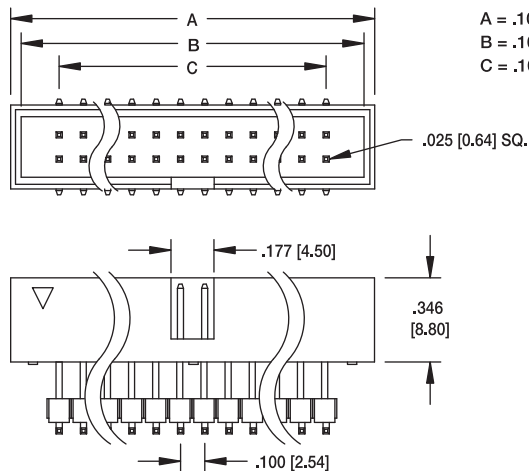
**BHRE-26-HUA-477**



**BHRE**

**ELEVATED SMT**

A = .100 [2.54] X No. of Positions /2 + .300 [7.62]  
 B = .100 [2.54] X No. of Positions /2 + .212 [5.40]  
 C = .100 [2.54] X No. of Spaces



**BHRE-20-VU-SMT-477**

