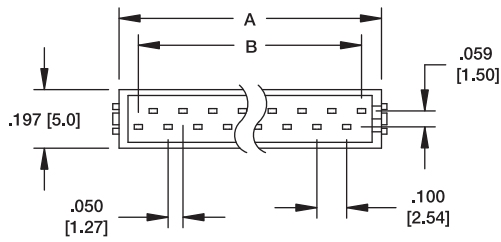
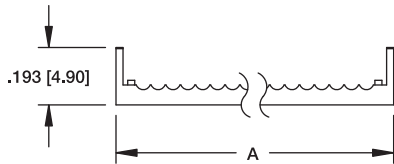
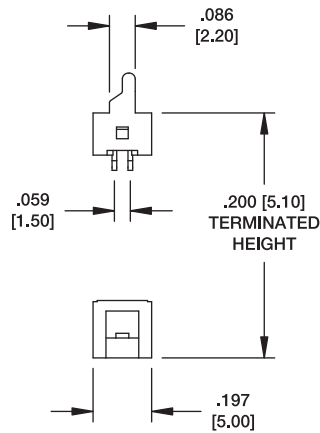
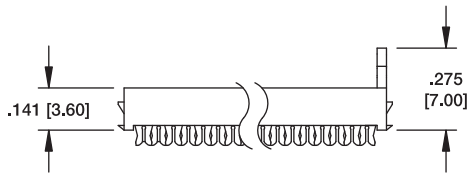


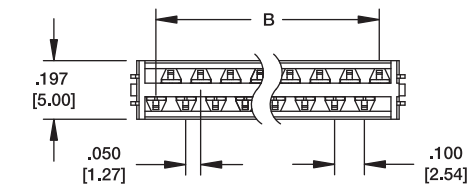
**MPH**  
IDC MALE PLUG



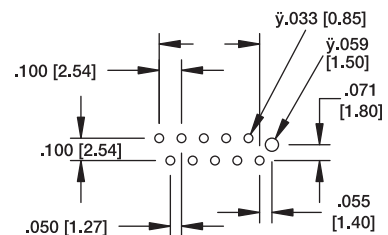
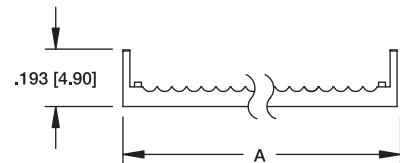
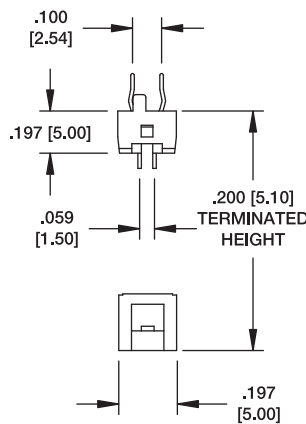
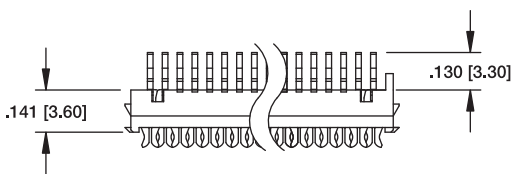
**MPH-20-F-SG**



**MFC**  
FLAT CABLE TO PCB PLUG



**MFC-20-F-SG**



**Recommended PCB Layout**

A =  $.050 [1.27] \times \text{\# of positions} + .120 [3.05]$   
 B =  $.050 [1.27] \times \text{\# of spaces}$