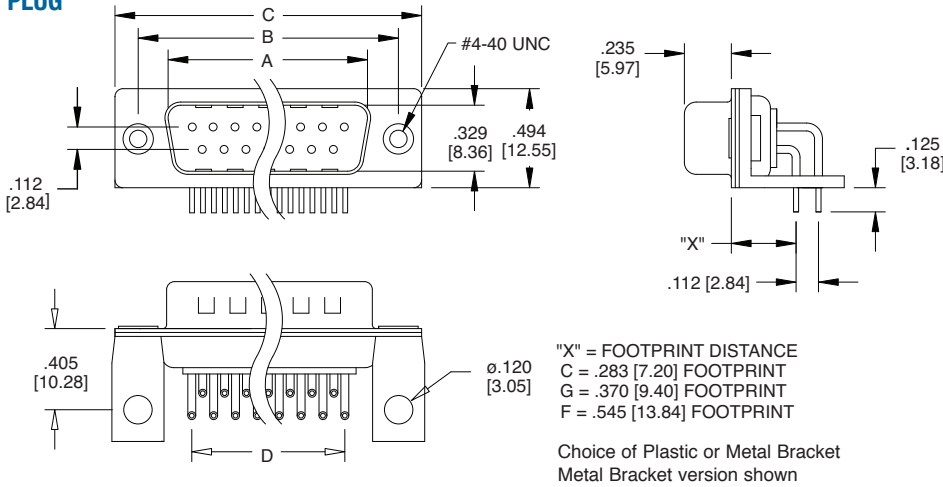
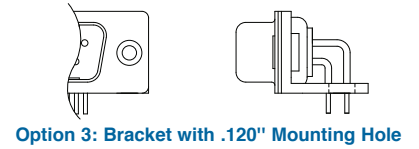
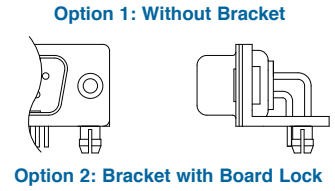
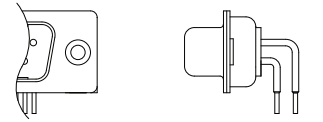


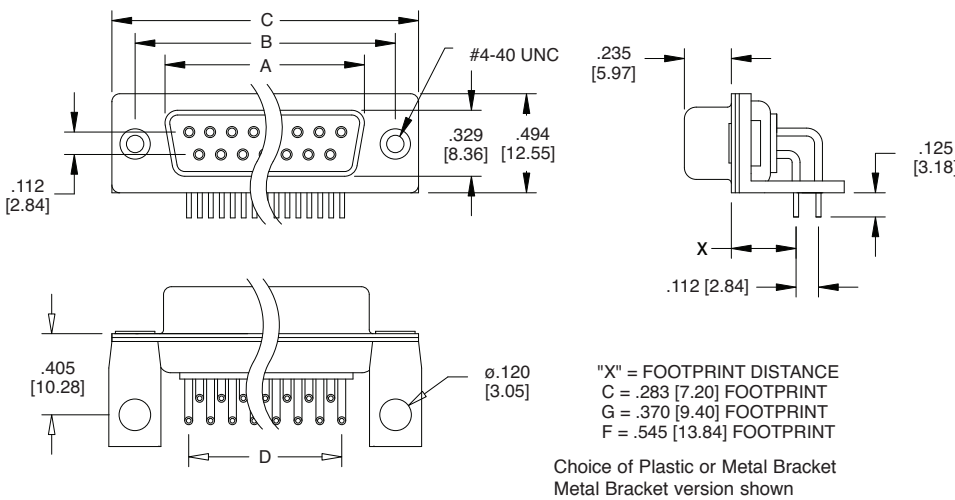
### PLUG



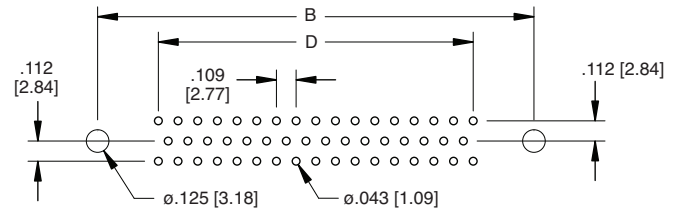
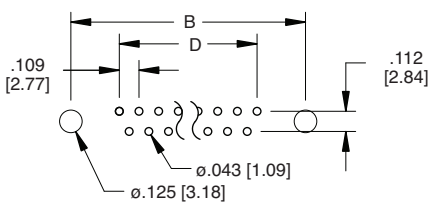
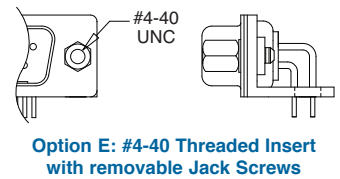
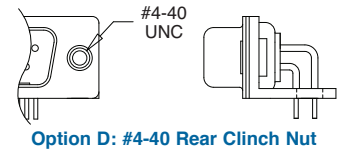
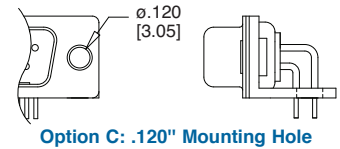
### PCB MOUNTING OPTIONS



### SOCKET



### MATING FACE MOUNTING OPTIONS



Recommended PCB Layout 9, 15, 25 & 37 Position

Recommended PCB Layout 50 Position

Unit: Inch / mm

Positions	PLUG	SOCKET	DIMENSIONS		
	A	A	B	C	D
9	.666 [16.92]	.643 [16.33]	.984 [24.99]	1.213 [30.81]	.436 [11.08]
15	.994 [25.25]	.971 [24.66]	1.312 [33.32]	1.541 [39.14]	.763 [19.39]
25	1.534 [38.96]	1.511 [38.38]	1.852 [47.04]	2.088 [53.04]	1.310 [33.24]
37	2.182 [55.43]	2.159 [54.84]	2.500 [63.50]	2.729 [69.32]	1.963 [49.86]
50	2.790 [52.80]	2.016 [52.34]	2.402 [61.00]	2.646 [67.20]	1.744 [44.32]