

INTRODUCTION:

Adam Tech right angle PCB SCSI II / III connectors are a popular high density interface for many I/O applications requiring a miniature connector. Offered in 20, 26, 28, 40, 50, 68, 80, 100 and 120 positions they are a good choice for high density compact applications. They feature a flat leaf and fork contact design and a one touch, locking receptacle/plug combination. Adam Tech connectors are manufactured with precision stamped contacts offering a choice of contact plating and a wide selection of mating and mounting options. They are ideal for most compact electronic applications.

FEATURES:

- Conforms to SCSI II standards
- One touch Locking Receptacle and Plug
- Blade contact with Blanked terminal
- Industry standard compatibility
- Durable metal shell design
- Precision formed bifurcated contacts
- Variety of Mating and mounting options

MATING CONNECTORS:

Adam Tech SCSI II / III connectors and all industry standard SCSI II / III connectors.

SPECIFICATIONS:

Material:

- Insulator: PBT, Glass filled, rated UL94V-0
- Insulator Color: Black
- Contacts: Phosphor Bronze
- Metal backshell: Zinc, Nickel Plated

Contact Plating:

- Gold Flash over nickel underplate on mating area, Tin over Copper underplate on tails

Electrical:

- Operating Voltage: 250V AC
- Current Rating: 1 Amps max.
- Contact Resistance: 35 mΩ max. initial
- Insulation Resistance: 500 MΩ min.
- Dielectric Withstanding Voltage: 500V AC for 1 minute

Mechanical:

- Insertion force: 5.3 oz max.
- Withdrawal force: 1.0 oz min.
- Durability: 100 cycles

Temperature Rating:

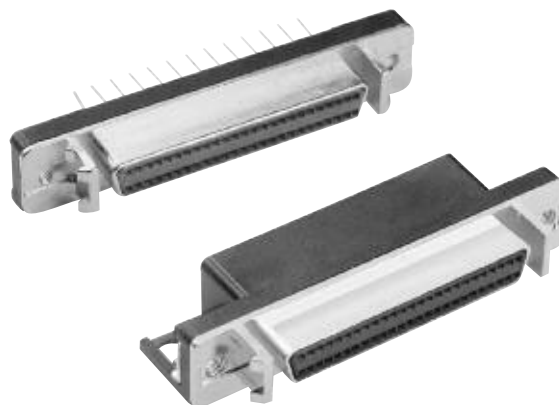
- Operating Temperature: -55°C ~ +105°C

PACKAGING:

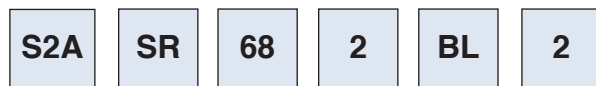
- Anti-ESD plastic trays

APPROVALS AND CERTIFICATIONS:

- UL Recognized & CSA Certified,
- File no. E224053



ORDERING INFORMATION



SERIES INDICATOR
S2A = SCSI II/III
.050"
Connector

MOUNTING ANGLE
SR = Socket,
Right
Angle
Mount
SV = Socket,
Vertical
Mount

THREADED MOUNTING HOLES
1 = #4-40
threaded
holes
2 = #2-56
threaded
holes
3 = M2.6 thread
holes

BOARD MOUNTING OPTIONS
TFA = Flange with #4-40
threaded holes
TFB = Flange with #2-56
threaded holes
TFC = .125 Dia. thru-holes
TFD = Flange with M2.6
threaded holes
BL = Board locks
(Right angle only)

MATING FACE MOUNTING OPTIONS
2 = Without latch blocks
3 = With latch blocks

POSITIONS
20, 26, 28, 40, 50, 60,
68, 80, 100, 120